



2024 ANNUAL
REPORT



Table of Contents

Our Impact	4
2024 Highlights	6
Our Programs	8
Our Supporters	14
Financial Report	28
Our Leaders	29

This Annual Report was developed with accessibility in mind. For a digital version compliant with the Americans with Disabilities Act, please visit guidingeyes.org.

Dear Friends,

Welcome to Guiding Eyes for the Blind's Annual Report, representing Fiscal Year 2024 (October 1, 2023 – September 30, 2024). During this period, Guiding Eyes made significant strides in **providing more of our beautiful, smart, and affectionate dogs as life-changing gifts to people who are blind or have vision loss** — thanks to your generosity and kind hearts.

Our forward-thinking perspective has become increasingly important. Low vision and blindness are among the leading causes of disability in the United States. Studies show that their prevalence will more than double over the next 30 years, as the population ages. With this development comes **increasing demand for our highly trained guide dogs**.

In this Annual Report, you'll learn about our adaptive, proactive efforts to **bring more of our world-class dogs to people who need them most**. Notably, we opened a fully accessible, urban field-training center in White Plains, New York, and we launched a capital campaign to further expand our facilities. We also share details about our innovative, creative approaches to breeding, raising, and training our dogs, and the extensive services we provide for our students and graduates.

You — our selfless family of donors, volunteers, and puppy raisers — are key to our ongoing success. Your generosity funds 100% of our operations; students receive our dogs and services for free.

We are pleased to report that our financial health is solid, but as demand rises, we need to be able to do more — and we need your ongoing support.

No one with vision loss should face the challenge alone. Since 1954, our magnificent guide dogs have brought connection, freedom and happiness to those living with vision loss. Thanks to you, our dogs will continue to bring meaningful change into each graduate's world, as we work to support them in living joyful, independent, fulfilling lives.

Together with you, we remain dedicated to one goal: **connecting exceptional guide dogs with individuals for greater independence**. We are forever grateful for your involvement as we transform lives through the incredible partnership of a Guiding Eyes guide dog.

Sincerely,

John L. Donnelly, *Board Chair*

Thomas A. Panek, *President & CEO*





Our Mission

Guiding Eyes for the Blind provides guide dogs to people with vision loss. We are passionate about connecting exceptional dogs with individuals for greater independence.

We believe in the powerful, meaningful change that our beautiful dogs bring to the lives of people facing the daily challenges that blindness and vision loss present.

Where We Work

We work out of our Headquarters and Training School in Yorktown Heights, New York; our Canine Development Center in Patterson, New York; and our Urban Training Center in White Plains, New York.

Our Puppy Raisers are located along the Eastern Seaboard, stretching from Maine to North Carolina, and west to Ohio and Colorado. Regional Guide Dog Mobility Instructors are located throughout the United States.

Service Funding

As a 501(c)(3) nonprofit organization, Guiding Eyes provides all services completely free of charge. Our support comes almost entirely from generous individuals and philanthropic organizations. We do not rely on government funding.



Guiding Eyes is an accredited member of the International Guide Dog Federation (IGDF), the organization that establishes worldwide standards for the breeding and training of guide dogs.

On the Cover

Third-time Guiding Eyes graduate Lora Ann and her yellow Labrador Retriever guide dog, Ruth, at home in Laguna Hills, California.

More Fiscal Year 2024 graduates are featured on pages 14-19.



70+
YEARS OF
EXPERIENCE

providing guide
dogs to people with
vision loss

10,000+
GUIDE DOG
TEAMS

have graduated
since our founding
in 1954

2,000+
COMPASSIONATE
VOLUNTEERS

are an essential
part of our
community





OUR IMPACT

FISCAL YEAR 2024



421
PUPPIES
BORN

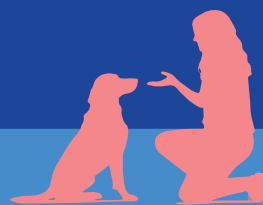
92%
Labrador
Retrievers.

8%
German
Shepherds.



322 PUPPIES

began training with
puppy raisers.



270 DOGS

began formal
guide dog training.



155 DOGS

graduated formal guide
dog training.



45 DOGS

went on to
other careers.

A decorative background for the top half of the page featuring several light blue silhouettes of people walking with guide dogs on leashes, arranged in a circular pattern around the central text.

155 TEAMS GRADUATED*

15 teams were Running Guides
and 16 teams graduated from our
Specialized Training Program.

60%
of graduates
were new to
our school.

40%
of graduates
were returning
students.

900 DOGS IN SERVICE

Approximately 900 Guiding Eyes dogs
actively worked for people with vision loss.

A photograph of a young woman with long brown hair, wearing a dark blue long-sleeved shirt and olive green cargo pants, kneeling next to a light-colored Labrador Retriever guide dog. The dog is sitting and looking towards the camera.

DID YOU KNOW?

It can cost up to
**\$50,000
ANNUALLY**
to train and care for a
guide dog throughout its
working lifetime with a
person who is blind.

*Training cycles may straddle two fiscal years.

2024 Highlights



1. Our fully accessible Urban Field Training Center opened in White Plains, New York.
2. The 47th Annual Guiding Eyes for the Blind Golf Classic raised funds in support of our mission.
3. Supporters and their dogs walked over 7,500 miles and raised more than \$78,000 in our WAGATHON.
4. Raisers and pups visited the American Museum of Natural History in New York City.



5



7



6



8

5. Volunteers from corporate partner PepsiCo visited campus to help bathe guide dogs in training, including a pup named Pepsi.
6. At the Guide Dog Draft, board member Eli Manning presented President & CEO Thomas Panek with the top pick: guide dog Ten.
7. Guiding Eyes appeared on FOX 5 NY to celebrate International Dog Day.
8. Held annually since 2018, the Lake Waramaug Polar Bear Run has raised nearly \$40,000 for Guiding Eyes.

Our Programs



Genetics & Breeding

As a global leader in genetics and breeding, Guiding Eyes is committed to advancing the health and temperament of our dogs. Our data-driven approach, combined with our collaborations with guide dog organizations, specialists, and universities, is designed to enhance genetic diversity and ensure that each generation of dogs improves upon the last.

Our purposefully bred puppies are born at the Canine Development Center in Patterson, New York, where broods and pups receive loving care and socialization before joining their puppy raiser's home.

Socialization

Guiding Eyes creates a strong foundation for our puppies through an extensive pre-training program that gives them a head start in developing positive, enjoyable relationships with their human companions,

What are you proudest of at Guiding Eyes?

"I'm incredibly grateful to be part of an organization where we have passionate, hardworking and selfless volunteers."

— Jessica, Regional Puppy Specialist & Puppy Raiser

and prepares them for their future roles as guide dogs.

From birth to 12 weeks, our pups are gradually introduced to various sights, sounds, social interactions, and early training, all aimed at maximizing their potential as guide dogs. Our Early Socialization Program involves volunteers who visit daily to gently massage the puppies starting at one week old, laying the groundwork for a vital bond between the puppies and their handlers. Volunteer Home Socializers extend this early socialization by helping the puppies acclimate to a home environment in a supportive and encouraging manner, as they explore the dynamics of a busy household.

Hockmeyer Puppy Pavilion

At 6-9 weeks old, our puppies move to spacious kennels at the Hockmeyer Puppy Pavilion, where they thrive in a fun, stimulating, toy-filled indoor and outdoor environment. Here, they continue to build on the progressive lessons taught by our dedicated staff and volunteers. Pups learn to exhibit self-control during feeding and handling, settle calmly in crates, and develop important problem-solving skills like climbing stairs and navigating underfootings.

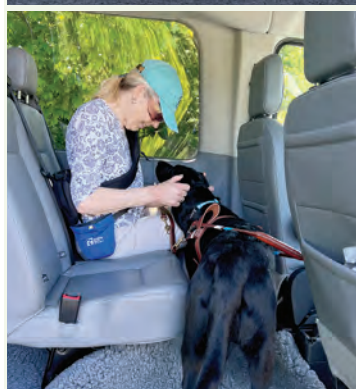
Puppy Raising

Puppies selected as potential future Guiding Eyes guide dogs are placed in volunteer homes for 12 to 18 months, where they receive the love, socialization, house manners, and basic obedience training essential for their success in guide dog training. Our dedicated Puppy Raisers play a crucial role in nurturing the puppies during this critical period.

The puppies' journey then continues at our Headquarters & Training Center in Yorktown Heights, New York, where they will realize their full potential and undergo rigorous training to become world-class Guiding Eyes guide dogs.

Brood & Stud Fostering

Guiding Eyes Breeding Dogs are vital to the future of our programs, and the volunteers who open their homes to these dogs are integral members of the Guiding Eyes



Journey of a Guiding Eyes for the Blind Guide Dog

BIRTH

Puppies are born at the Canine Development Center in Patterson, New York.

8 WEEKS TO 16 MONTHS

Puppies receive early training and socialization.

16 MONTHS TO 22 MONTHS

Dogs join Guide Dog Mobility Instructors in Yorktown Heights, New York, to learn guide work.

22 MONTHS TO 8-10 YEARS

Dogs are matched with people who are blind, living with them as working guide dogs.

8-10 YEARS+

Dogs retire from service, living with their handler, their Puppy Raiser, or an approved adopter.



community. Brood and stud fosters and sitters are entrusted with the health, well-being, and happiness of our breeding dogs, ensuring they are well-cared for and thriving. These volunteers also serve as our ambassadors, proudly showcasing our exceptional dogs to their communities.

Kennel Enrichment

Guiding Eyes' comprehensive kennel enrichment program is designed to ensure that our dogs have a positive and enjoyable stay with us. By exposing them to a variety of new stimuli, such as group playtime, special toys (like rope or squeaky toys, many of which are donated by corporate partners such as Kong, Jolly Pets, and Nylabone, or gifted from our Amazon Wish List), natural and artificial objects, different textures/surfaces, and puzzles/food toys, we keep them engaged and curious.

Our dedicated staff and volunteers provide a balanced mix of exercise and rest to stimulate dogs' minds, enhance their well-being, and prevent stress during this crucial training period.

Caring for Our Guide Dogs

At Guiding Eyes, we are committed to delivering excellence in veterinary care. We operate two advanced veterinary hospitals: one at our main campus in Yorktown Heights, New York, and the other at our Canine Development Center in Patterson, New York.

Our team of veterinarians, licensed veterinary technicians, and administrative staff provide exceptional care to dogs in the Breeding, Puppy, and Training Programs. Our veterinary services extend to all working Guiding Eyes dogs through remote communication, referrals, and utilizing our own facilities when proximity allows.

Our veterinary team performs a wide range of procedures, including routine surgeries and dental work, X-rays, sonograms, endoscopy, laboratory tests, vaccinations, and various wellness services. We also collaborate with specialists in ophthalmology, cardiology, neurology, orthopedics, and radiology, many of whom generously donate their services to ensure our dogs receive the highest standard of care.



What makes Guiding Eyes dogs special?

“One quality of a stellar guide dog is resiliency: their ability to rise to challenges. Another is adaptability: their ability to bond to humans with an open, untainted heart.”

— Andrea, Guide Dog Mobility Instructor



Training Our Guide Dogs

Dogs selected for guide dog training embark on a structured learning journey, mastering guiding concepts, step by step, and reinforcing previous lessons through numerous repetitions in diverse environments.

Each dog is paired with a Guide Dog Mobility Instructor, who builds a strong bond with the dog through play, obedience training, work, and quality time together. Our instructors dedicate a minimum of five months to each dog's training.

A guide dog is deemed ready for placement when they consistently and safely respond to all work situations they will encounter while guiding, such as indicating a curb at street crossings, detecting and avoiding obstacles, and navigating various forms of public transportation. We carefully match each guide dog with a person based on pace, pull, personality, and the individual's preferences, ensuring a harmonious partnership.



What sets Guiding Eyes apart?

“Hundreds of helping hands work to bring each dog to fruition, to become a partner for one individual. Together, our volunteers, staff, and donors make these amazing teams possible.”

— Rebekah, Director of Donor Relations

Career-Change Dogs

Each Guiding Eyes dog demonstrates their potential career path. Only dogs showing the self-confidence and composure required for guide work are selected for guide dog training and placement with individuals who are blind or have vision loss.

Dogs not chosen for guide dog work often go on to other important careers as working dogs. For example, a dog with a little too much energy to settle may enjoy an active career using their nose for detection in law enforcement. Others may become service dogs in partner organizations.

Dogs who aren't suited to guide work or other careers are placed in loving homes through public adoption, ensuring they lead happy and fulfilling lives.

Student Training Programs

Guiding Eyes is not one-size-fits-all; we recognize that every guide dog and student is unique, and our approach is tailored to meet each student's individual needs. Our Training Teams and Placement Teams work in concert to find the ideal match between a person and their guide dog, and we provide ongoing support throughout their partnership.

We offer flexible options for our students. These include On-Campus Training at our headquarters in Yorktown Heights, New York, and Home Training, serving students with extenuating circumstances who otherwise cannot attend on-campus training.

Our On-Campus class size has increased to serve more people and offer greater camaraderie and socialization amongst

peers, while retaining the student-to-instructor ratio at 2:1 for more individualized training.

Our Specialized Training Program serves individuals with additional challenges, such as gait and balance issues, cognitive challenges, and hearing loss. Our one-of-a-kind Running Guides Program serves those who are looking for a guide dog who can run with them to help enhance their physical fitness routine.

Our instructors refine their training methods to meet students' individual requirements and ensure success.

Graduation

Graduation ceremonies are the exciting culmination of our guide dog teams' training journey. Held every two weeks at our Yorktown Heights, New York, campus, these joyful events bring together puppy raisers, volunteers, donors, and supporters to celebrate this special milestone with our new guide dog teams.

Everyone is welcome to attend graduations in person or via livestream, and past ceremonies are viewable on our website anytime. Visit guidingeyes.org/graduation for details.

Retirement

The retirement age for guide dogs varies based on individual health, age, and circumstances. Graduates have the first opportunity to adopt their retired guide dog or choose an approved adopter from close friends or family.

If the graduate is unable to adopt, the dog may return to their Puppy Raiser or be placed in another loving home through public adoption. Our commitment is to ensure every retired guide dog continues to live a fulfilling and happy life.

Caring for Our Students

Guiding Eyes' dedicated nursing staff supports both On-Campus Training and Home Training students from the start of the application process. They maintain close communication with students and their at-home practitioners to ensure they feel connected, comfortable, and safe during our program. While On-Campus Training is in session, our nurses are available 24/7 to assist with routine medical needs and provide first aid as necessary.

Our on-campus dining program at Rosie's Café offers custom-prepared meals designed to nourish our students while accommodating various dietary needs. Students often highlight the culinary experience as a favorite part of their time at Guiding Eyes.

Our beautiful, fully accessible Yorktown Heights, New York, campus offers a wide range of activities to help students make the most of their personal time, ensuring a well-rounded and enjoyable experience.



Our Supporters

CATEGORIES

Donors \$100,000 and Up

Donors \$50,000 to \$99,999

Donors \$25,000 to \$49,999

Donors \$10,000 to \$24,999

Donors \$5,000 to \$9,999

Donors \$2,500 to \$4,999

Donors \$1,000 to \$2,499

Ways to Give

Lions Clubs

In-Kind Gifts

Matching Gift and Employee Giving Programs

Planned Giving

- Pathfinders
- Bequests & Trusts

We are grateful to our donors who generously supported our mission during the 2024 fiscal year, October 1, 2023 to September 30, 2024. Your gifts make it all possible!

\$100,000 and Up

Christine McKendry and Eduardo Andrade
Andrew Damiano
Nancy and John Donnelly
Betsy and Tim Dunn
In Loving Memory of Cherese Mari Laulhere
Brian and Kathleen MacLean
James L. Mathas Foundation
Suttle Charitable Trust
The Wohlers Family Foundation

\$50,000 to \$99,999

Bannerot-Lappe Foundation
Loreen Beisswenger Farish Charitable Foundation
Barbara Brunner
W.H. Crocus Fund at the Oklahoma City Community Foundation
Sam and Helga Feldman Foundation
The Flatley Foundation
Joseph and Paulette Gootter
Glenn Greenberg and Linda Vester Foundation
John King
Lavelle Fund for the Blind
Eli Manning
Phyllis Milton
NM Morris Family Foundation, Inc.
Andrea Redmond
Doctor Domenic A. Vavala Charitable Fund of the Rhode Island Foundation
The George T. Walker Charitable Fund of the Lehigh Valley Community Foundation

\$25,000 to \$49,999

The Sandra Atlas Bass and Edythe and Sol G. Atlas Fund, Inc.
Carolyn Brethen
Samual M. and Alma Catsman Foundation
Steven and Deborah Cohen
The Elliott Family Foundation

Lisha Evans
Charles A. Frueauff Foundation, Inc.
The Gatorade Company
The Goodnow Fund
Wayne Hockmeyer
William G. and Helen C. Hoffman Foundation
Paul Holland
Mr. and Mrs. Robert Hyde
Melvin Lazar
James T. Lee Foundation
Jil Maheu
A B Massey Charitable Gift Fund
Janice and Nicholas Pepe
Allene Reuss Memorial Trust
Cynthia Sullivan and Robert Rollmann
Judith A. Rusher
Sidley Austin LLP
Ruth Sidorowicz
Hugh Taylor
Anne Travalia
Cynthia Vanneck
The Lance R. Wachenheim Foundation
Sarah and John Wildemore
Ronald J. Woods Charitable Trust

\$10,000 to \$24,999

Louis and Anne Abrons Foundation, Inc.
H.A. and J.W. Alburger Charitable Trust
AllianceBernstein
Pamela Allison
Warren Azzara
John Barfield
Debra Bernstein
Boerger Foundation
Cheryl and Gary Bosak
Boston Center for Blind Children
Irene Boylan
Gilberte Breslin
Mary Bresnan
Busch Family Fund
Busy Beaver Fund
Camienner Foundation

Michael and Mary Carpenter
Ellen and Nirmal Chatterjee
Jay Coffman
C.S. Craig Family Foundation
The Craigmyle Foundation
Crane Charitable Funds
The Creek Bed Foundation
Phillip L. Sr. and Linda Currie
Elsie H. Del Fierro Trust
Russell and Bonnie Disbro
Howard A. Drescher
Foundation
Harriett and Bob Druskin
Davis Elkins Foundation
Charitable Trust
Lillian Feder Foundation
Valerie Fichera
Delbert French, II*
Gilmore Foundation
Mark Glasser
Anne Goldfield
Carolyn Goodrich
Robin L. Gordon
Maris Groger
June H. Haines
Marianne Halle
Karen R. Hill
E. Hoover
Rosemary Hughes
Janet Humphreys
Sonia B. Jakowlew Charitable
Fund
LE and Jan B Jones Family
Fund of the South Carolina
Christian Foundation
Linda and Gerald Joseph
Cynthia and Danny Jost
The Katzenberger
Foundation, Inc.
Dr. Bruce Kaufman and Mrs.
Susan Kaufman
Suzanne Kelsey
Charles and Lucille King
Family Foundation
Betsy and Douglas Korn
Amy and Dan Kramer
Katherine Lawrence
Pamela Kuhn Lent and
John Lent
Lilly's Gift Foundation
Josephine Luicci
The Lundy Fetterman
Family Foundation Trust
A. L. Luria and
Jennie L. Luria Foundation
Lindsay and Joe Mahoney
Gail and Al Maiolo
Gail Malnati
Eric Margolis
Dondrea and Danny Marshall
Joy Matson
Susan K. McDaniel
The Melik-Baschkopf
Foundation
Merrill - a Bank of America
company
Robert Merrill*
Patricia Meyer
J. S. and S. Michaan
Foundation
Mithun Family
Foundation
Patricia Mondello

Morgan Stanley
Jeanne Carol Myers
James and Louisa Neel
William and Anita
Newman Foundation
Laura J. Niles
Foundation, Inc.
Ann O'Donnell
Susan Oldfield
Diane Oltmann
M. Linda Parker
Richard Parower
The Peninsula Charities
Foundation II
Jeanette Peter
Linda M. Phillips
Lisa Phipps
James Polis
William Ransom
Mildred Susan Riggio
Andrea Robbins
Larry Schnur and
Donna Roth
Laurie and Marc Rovner
Doris R. Satterwhite
Daniel Savoie
The Saxer Family Foundation
Arlene Schafer
Scharpf Family Foundation
James Warren Searcy
Charitable Trust
Second Chance for Sight
Foundation, Inc.
John and Gabrielle Shamsey
Beverly Simone
SLA Foundation
Sarah Smith
Sean Spencer
Neil and Susan Stockel
Martha Washington Straus
and Harry H. Strauss
Foundation, Inc.
Leslie Strupp
Jeanne Swartchild
James and Patricia Switzer
Tanner Industries, Inc.
Marylin Taylor
Andrea and David Tracy
Jerry Umberger
Judith Walker
Missy Weidhorn
Weiss Family Foundation
The Winston Foundation, Inc.
Anna Zeiler

\$5,000 to \$9,999

Jane Adams
Shelley Adelson
Aero Hardware and Parts Co.
Lynda Alderink
Kevin Alger
Sylvia Almendinger
James L. Amendola
Foundation
Fredrica and Ray Applebaum
Linda Atteberry
Pamela Avedisian
Eliza Baird
R. Barton
John and Nellie Bastien
Memorial Foundation
Mr. and Mrs. Scott Belair

What made you choose Guiding Eyes?



*"I knew Guiding Eyes was the right school
because of the support and everything
they offer. I'm thankful and blessed to
have Valise. Life will never be the same!"*

- Jessica & Valise

Barbra Waldfogel, Zoe Berg
and Sydney Berg Charitable
Fund
The Emma and Georgina
Bloomberg Foundation
Susan Bogin
Mr. and Mrs. Douglas
Boustead
William J. Brand
Alice Bratton Clark
Charles and Lois Marie Bright
Foundation
Sandra Brock
Broughton Fund at The
Philadelphia Foundation
Jackie H. Brown
Robin Brown
Brown and Brown of New
York, Inc.
Theodore Bunnell
Cliff Burrows
Karyn Caliri
Sara and Chris Carey
Susan Chamberlin
The Ilene Clow Foundation
Constance M. Cooper
Charitable Foundation
D'Agostino Foundation
Don Daseke
Data Axle
Laura De Reitzes
The DeMarco Family
Reginald Dickson
John and Lynn Dillon
Doolittle Family
Foundation, Inc.
Queta Dregely
David Driver
Lucy Drulias
Sidney Edelman
The Robert and Gail Edelstein
Foundation
Gillian Eke*
Joyce M. Englund Charitable
Foundation
Bob and Ruth Escher
Gene Eskilden
Peter Faulkner

Harriett Felman
Jennifer Firestone
Janet Frankovsky
Carlo and Kim Frappolli
George Gatto
GBU Financial Life
Genesco Sports
Janice Gondek
Karen Greene
Kenton Griffis
Helen E. and Stanley H.
Grossman Fund of the
Rhode Island Community
Foundation
David Groves and Sheila
Vannoy
The Gumbo Foundation
Karen Hahn
Mary P. Dolciani Halloran
Foundation
Taylor Hanex
James Hansen
Healthy Vision Association
Michael Herman and Dina
Puzansky
Hieronymus Family Fund, Inc.
Marshall Hilsberg
Hoag Family Charitable
Foundation
Mary and Philip Hogan
Barbara Holliday
John W. and Theresa Holly
Donald and Jennifer
Holmgren
Richard and Rachel Honquest
Donna Huttenhoff
Holly Ingham
Interoceanic Corporation
Marie Jacobs
Clara L. D. Jeffery Charitable
Trust
Julie Johnson
Fannie and Stephen Kahn
Charitable Foundation
Jeanne and Richard Kaskey
Foundation
Barbara and Bentley Kassal
Foundation

Lucy Keefe
 Judith Kickert
 Gerald King
 Leslie Kriegler
 Nancy Lambert
 Roma Landry
 Warren and Barbara Larson
 Marilyn Lauesen
 Gail Laulunen
 Dolores Leite
 Jan Lewis
 Josh Liptzin
 John Lochey
 Cristy Lockwood
 Michael Mack
 Mary Ann Mahoney
 Ralph G. and Wilma J.
 Maibaum Foundation
 Gerald Marinoff
 George Matecko and Claire
 Matecko
 Harris Mathews Charitable
 Foundation
 Joan McCallum
 Kathleen McCarthy
 J.M. McDonald
 Foundation, Inc.
 Sharon McIntosh
 Dale McKenzie
 Allan Mehrrens
 Christine Mele
 Eleanor Metcalf
 Katie Meuer
 Megan Meuse
 John Meyer
 Victoria Milam
 Agnes Mulroney
 Charles and Richard Oestreich
 Foundation
 Curtis and O'Hara Foundation
 Arthur J. and Esther A.
 Ohlsson Charitable Trust
 Old Oaks Country Club
 Foundation
 Oppenheim Family Fund

Isaac Osaki
 Jane Osler Kyle
 The Paetzig Fund
 Nancy Perkins
 David and Lynne Petronella
 Merna and Steven Pickett
 Marie Poos
 Melissa Powell
 Scott Prosan
 The Raffiani Family
 Foundation
 Dr. Cheryl L. Raymond
 Raymond Family Foundation
 Katharine Rayner
 Marcia Regan
 Fran Reis
 Ridgefield Thrift Shop
 Gerald and Diane Roba
 Rohauer Collection
 Foundation, Inc.
 Helen Root
 Victor and Suzanne
 Rosenzweig
 Carl and Verna Schmidt
 Foundation
 Richard Schwartz
 Carol Scioli
 Linda Seaman
 Sexton Family Foundation
 Cormac Shields
 Nicholas Skinner
 The Sloman Foundation
 SMBC Global Foundation, Inc.
 Daryl R. Smith
 Duane C. Smith
 Mr. Robert Smith
 Daniel E. Sparks
 Mary Spencer
 Andrew W. Stackel and
 Elizabeth A. Stein
 The Stahl Family Charitable
 Foundation
 Martha Steele and
 Robert Stymeist
 Howard Stern

Mickie Stokes
 Mark and Julie Svoboda
 Anne Swan
 Vivienne Talbott
 Margaretta Taylor
 Clare Teixeira
 Milton Tenenbaum Charitable
 Foundation
 Carol Teter
 Vinay Thapar
 David L. Thorp
 Hope Tobey
 Erna Tomiser
 Charlie Tonkin
 Anita and Edward Tortorici
 Charitable Fund
 TrailHeads
 Mary Ann Trapp
 Patsy Vacarella
 Mr. and Mrs. Larry and Margie
 Weinreb
 David and Sylvia Weisz Family
 Foundation
 Barbara Wells
 Dyllis and William Wells
 Nina W. Werblow Charitable
 Trust
 Carlisle Wildeman
 Barbara J. Woodruff
 Catherine Woods
 Louise and Kurt Wulff
 Yardi Systems
 Paul and Susan Younkin
 Charitable Fund
 Zvilin Fund of the Princeton
 Area Community Foundation

Cleveland West Puppy Raising
 Region
 Diane Cohen
 Marlene Countermine
 Gloria C. Crotty Charitable
 Foundation
 Joan Crowell
 Judith and Donald Cumming
 Neva Curoe
 Mark D'Antonio
 Jane Davidson
 Michael D'Elia
 Delta Gamma Foundation
 Lori Derose
 Linda Dettloff
 Kat and Jason Di Piazza
 Shirley Donnally
 Anita Doyle
 Robbie Dunlap
 Betty Dunne
 Susan Dusenberry
 Ellen Yerman Charitable
 Foundation
 Susan Ellis
 Burton Eno
 Enterprise Holdings
 Foundation
 F.W. Webb Company
 Peter and Louise Fecanin
 Laura Fey
 Edgar Field
 Beverly L Fingerle
 Steven Flagg
 Noel Foreman Foundation
 Diane Froot
 Giglio Foundation
 Martha Ginsberg
 Lynne Glennon
 Stuart Glick
 God's Grace Foundation
 Charlotte Gourley
 Michele and Marty Greenberg
 Greenman-Pedersen, Inc.
 Scott and Kristin Gregory
 George Griffin
 Daniel and Sharon Grygas
 Douglas Hall
 Leean Hanley
 Mable Harrington
 Jane Haugan
 Susan Haugen-Summer
 Ms. Sue Hayes
 Martha Heavrin
 Linda Helldorfer
 Suzanne Hogan
 Joyce Horan
 Michael Hronec
 Stephen Hurley
 John Hutchinson &
 Dr. Kathy Platoni
 Illinois Tool Works, Inc.
 J. W. Mitchell Company
 Virginia Jacko
 Blanche Maria Johnson
 Linda Kane
 Christine and Donald Karas
 Teresa Kean
 Janell Keith
 Edward and Brigid Kenney
 Susan Keppler
 Elizabeth Key
 Wallace King
 Gerard Klingman



How would you describe your guide dog?

"Laurel is a very smart and outgoing dog. She has made my training an easy process. She knew what to do right away and it was like, 'Follow me – I got you.'"

— Carlton & Laurel

Curt and Susan Koster
 Kevin and Stacey Kotler
 Marlo Krueger
 Lynn Lamar
 Regina Lancaster
 Curt and Diane Landtroop
 Margaret Lapcewich
 Thomas and Nikki Lasala
 Ray Lee
 Jacqueline Leung
 Betty Levinson
 Michael J. and Patricia
 Levitt Family Charitable
 Foundation
 Laura Lichtenstein
 Mr. Joseph Loonan
 Kathrine Lowery
 LPLFinancial
 Georgia Lucas Barnett
 Jeanine MacFadyen
 Brian and Florence Mahony
 Fund
 Pamela Malinchak
 Suzanne Manieri
 Warren and Renee Marcus
 Martha and Bruce Marquand
 Maryann Marston
 Lilo Masters Fund
 Bernadette McCarty
 Gregory and Vickie
 McLaughlin
 David and Susan McMunn
 Kathryn Meyers
 Jennifer Miller
 James Mindling
 Ruth Mitchell
 Sucesion Molinari
 The Anne R. Monroe
 Foundation
 Jean Moore
 John Morgridge
 Moyano
 Nicole and Leslie Murch
 Howie and Judy Naugle
 Stephen Neff
 Lynn and Robert Newman
 Sidney Nisbet
 Robert Oates
 Moses L. Parshelsky
 Foundation
 PCSB Bank
 Elaine Peters
 Lisa Petrovich
 Sara Phillips
 Frances Philp
 Willard Pitzner
 Pivotal Enterprises LLC
 Pledgeling Foundation
 Donna Pritula
 PVH Corp.
 Gail Quinn
 Rainy Day Fund of the
 Community Foundations of
 the Hudson Valley
 Michael Randazzo
 The Raulinatis-Schneider Fund
 Takako Richards
 Bruce Roberts
 Leo and Christine Rocca
 Mary Rojas
 The Roron Foundation, Inc.
 Ann Rosche
 Marianne Rossi

Robin Rotiroti
 Babette Rubin
 Joseph Salgado
 Beth Saltzman
 Kathy Sanchez
 Noel Schachner
 Lynn Schlanger
 Sebastian Schroder
 Deborah Sentochnik
 Seventh District Foundation
 The Harvey and Elizabeth
 Prior Shriber Charitable
 Foundation
 Karen Shrode
 Albert Sickinger
 James Skrocki
 Donna Smith
 Gordon S. and Wilma V. Smith
 Family Endowment
 Catherine and
 Thomas McC. Souther
 Carmen Stanton
 Joanne Starr
 Paige Starr
 Lynn Stern and Jeremy Lang
 Scott Stern
 Jeffrey Sutton
 Suveto Buyer, LLC
 Jeffrey Tarson
 Kelly A Thomas
 Vickie Thompson
 Amy Thorn
 Susan Tolsky Foundation
 Kenneth Townson Fund
 Daniel and Debra Trusler
 Turner Construction Company
 Mei-ling Uliasz
 Martin and Robin Van Buren
 Ann Vanweelden
 Phyllis Varacalli
 Voertman Family Fund
 Theresa Vonderschmitt
 Suzanne Wallace
 John Wanick
 Wells Fargo Advisors, LLC
 Bernard Westner
 Jan Wheeler
 Roger Williams
 Gail Wittmuss
 Craig and Barbara Wolf
 Ronnie Wood
 The Worby Charitable
 Foundation
 Charlie and Patty Wright
 Linda Young
 John Yurtchuk

\$1,000 to \$2,499

Ab Cord Foundation
 Bonnie Abendschan
 Helen Adair Foundation of the
 St. Paul Foundation
 Carol Adams Boring
 Anne Aguilar
 Clemene Alascano
 Mardi Albers
 Tanya Aleman
 Allen Family Foundation
 Bob and Carol Allen
 Frank Allen
 Kim Allen and Alex Cohen
 Joyce Altera
 Janice Altomare

What's your favorite part of having a guide dog?



*"I have so much more confidence
because I learned to put my trust in
Gait, and she comes through every time."*

— Aliceson & Gait

Joe Alvarado
 Vincent Amatucci
 The Amber Charitable Fund
 Amityville Post 1015 American
 Legion
 Deanna Amos
 Andover Haunted House
 Foundation
 Nancy Andrews
 Carol Ankrom
 Ann Nelson Charitable Fund
 Arizona Community
 Foundation
 Elizabeth Armstrong
 Joan Arndorfer
 Eileen Ash
 Michael Ashworth
 Russell Atha III
 Melody Atwell
 The Susan A. and Donald
 P. Babson Charitable
 Foundation
 Kathleen Bachmann
 Susan B. Bailey
 Baird Foundation, Inc.
 James and Veronica Baker
 Wendy Banka
 Terrell Barch
 Barbara Barker
 Larry Barker
 Gerry Barnes
 Victoria Barr
 James and Sharon Barta
 Luke Bartkiewicz
 Anne Basiliere
 Richard Bassett
 Walter R. and Jill E. Bateman II
 Alben F. and Clara G. Bates
 Foundation
 Kathleen Bates
 Jon Bauer
 Barbara M. Bays
 Maryann Beachler
 Randy Beasley
 Julia Becker
 Ramona Becker
 Deborah Beckner
 Virginia Beer

Paul and Mary Ellen Behringer
 Dennis Belgard
 Jeanne Belliston
 Mark Bello
 Antonia Beltrone Sabre
 Helen Bemis
 Tony Benjamin
 Inez Benjamin Foundation
 Ann B. Bennett
 Deborah Bennett
 James Bennett
 Dianne Benoni
 Janet Benson
 Benvenuto Family Fund
 Rosemary R. Berardi
 Joanne Berghold
 Barbara Berman
 Scott Berman
 Jodonna Berquist
 Maddy and Nicki Berthel Fund
 John Berthelsen
 Patricia Bevan
 Roger Beverage
 Kankan and Samina
 Bhattacharyya
 Pat Bianconi
 Myra Biblowit
 Patsy and Richard Biegel
 Kenneth Bielemeier
 Barbara Bill
 Terri and Irwin Binder
 Lowell Bircher
 Lynne Birdt
 Cole Bischoff
 Dr. and Mrs. John Bivona
 Gretchen Black
 Deborah and Mark Blackman
 Ruby Blackwell
 Lynn Blades
 Andrew G. and Sara Bland
 Joyce Blankenship
 Stephen Blaskevitch Jr.
 Helen Blekkenk
 Terry Blindt
 Bunny and Jeffrey Blood
 Richard and Nancy Blum
 Bogemyr Charitable Fund
 Laura Bohland

How was your training experience?



“Training at Guiding Eyes was great. From the moment I arrived, I knew it was a special place, and I felt safe. It was like a hotel with the ultimate accessibility features.”

— Aimee & Bryna

Marie Bonazinga
Helen Bonczyk
Jonathan Bookman
Norris Boone
Kerry Borrell
Mary Bourque
Donald F Bouseman
William Bousquette
Robert Bowman
Annamarie Braden
Judith Bradford
Craig Bradley
Kim Bradley
M. Jacqueline Bradley
Sharon Bradley
Marty Brady
Phyllis Brady
Terence Brady
David Bramer
Martha Brandon
Anna Brann
Thomas Brantley
Terry Braswell
Carol Bratt
Robin Bresnahan
David Brisbois
James Brockway
Theresa Brokowski
Sharon Bromberg
Karen Bronzo
David Brooks
Beverly Brown
Craig and Janet Brown
Harold Brown
Kevin Brown, M.D.
Mary Bruchmann
Fred and Maxi Bruhns
Fred Brunke
Robert Bruns
Barbara Bryson-Odom
Bonita Bula
Donna Bumpass
Thomas Burger
James Burke
Raymond Burke
John Burtis
Rose Burton
Donna Burzynski

Larry R. and Peggy J. Busscher
Kenneth Butch
Sharon Butcher
Ellie, Jennifer and Sydney Butler
Robert Butzman
Edward Cahill
Barbara Caine
Peter Calkin
Louise Callahan
Tim and Deborah Callahan
Don and Barbara Camarata
Tracy Cameron
Christopher Campanale
Linda Campbell
Nadine Cancell
Dennis Canning
Gary Cappotelli
Thomas Carman
Bill Carmody
Mercedes Carota
Armina Carpenter
Terry Carr*
Cathy Carroll
Mark and Anne Carron
Randy Carstens
Stephen Cartolano
Jerri L. Carver
Robert Case, DVM
Ernest and Suanne Casseday
Al and Karen Cassedy
Jeremy Cassels-Smith
Margaret Cavenagh
Deardre Chao
Kelly Chapman
Judith Char
Kirstin Chmara
Stanley Chow
Randolph Christen
Dennis and Marilyn Christensen
Marion Christnach
Jennifer and Ron Christopher
Jerome and Judy Cieciva
Karen Cigan
Daniel Clark
Kari Clark
Robert Clark

Frederick Clayton
Edward and Cari Cleary
Marilyn Cleland
The Harry Cobey Foundation
David Coburn
Michele Cocco
Margie and Louis Coccodrilli
Robert and Diane Coderre
Hans Coffeng
Cecilia Colbert, Ph.D.
Laura Coleman
Donna Colin
Lauryn and Renee Collins
Vicki Collins
George and Donna Colon
J. Colvin
Michael Conlon
Shirley Conrad
Nancy Conro
L. Contreras
Lorenzo Contreras
Elaine Cook
Joseph Cook
Magaret A. Cook
Michael and Barbara Cooper
Jacqueline Corde
Theodora Corroon
Corymore Foundation
George Cottiero
Kathryn Coughlin
Ernest and Carol Covey
Ted Cox
Patricia Cox Strasburger
Charles Craig
Robert and Laurelyn Craig
Arnold Crelrier
David and Anne Cremons
Sarah Croce
Jane Cromartie
W. E. Cross Charitable
Foundation, Inc.
Agnes Crowley
Marion Croxton
G. Richard Cutter
Laura Czapski
Gerald and Kathleen Czarnowsky
Antoinette and George Daab
Jennifer Daniel
Karen Daniels and Jonathan Goyert
Linda Darico
Jane Daugherty
Barbara Davis
Barry and Caroline Davis Family Foundation
Christine Davis
Pat Davis
Sharon Davis
Suzanne Davis
Mary Lynn De Loatch
Diane De Luna
Gary E. and Kathy De Patto
Joy Dean
Edward Debartolo
Larry Dee
Deborah Deems
Gustavo Del Toro
Sara Delo
Stuart and Marlene Delugish
Richard and Linda Demme
Janet Demuth
Nancy Denison

Doris Dennee
Denise DeSalvo
Susan Desjardins
Sandra Dethlefsen
Viola Detienne
Paul Deutsch
Mary Jane Devins
Janice Dewes
The Dibona Family Foundation
Lawrence Dicerbo
Nicholas DiMiceli
Lisa Dinoto
Gretchen Docter
Irene Dodd
Alvin Doebling
Paula Domermuth
Jennifer Donald
Harry Donenfeld Foundation
Thomas Donnelly
Kathy Dougan
David and Deborah Douglas
Karen Dowell
Anthony Dresden
Cheryl Dubs
Mary Ann Dudko
Edna Duke
Aline Dulaney
David Duling
Cece and Margaret Dunderman
Louis Durko
Wendy and John Duryea
Dede Duson
Samuel Dyka
Frances Edelstein
James Edwards
Joyce Edwards
Dennis Eflin
Andrea Eisenberg
Elaine Ellenbogen
Deni Elliott
Gerard Elverum
Barbaranne Elwood
Paul Erisman
Lisbeth Esperti
Carol Esslinger
Therese Esswein
Lori Etkin
Cliff Evans
David Evans
John Evans
Karen Evans
Elaine Ewen
Eckhard Fadtke
Michael Farber
Neal Farber
Sandra Farmer
Dennis and Diane Fashano
Bill Feeney
Nadine Felix
Gary J. and Susan O. Ferrentino Foundation
William K. Fescenmeyer
Michael Festa
Terrence Fettes
Janice Finkel
First Church of Christ Congregational
Sandy Fischer
John Fish
Norman Fitzgerald
Silvia Flavin
Maralyn Fleming

Ronald Flores
 Theodora Flores
 Steve Floyd
 Betty Fogleman
 Kelly Foglio
 Laura Forbes
 William and Mary Forcellon
 Annette Ford
 Ellen Forte
 Dan Foss
 Carolyn Fowler
 Frank B. and Susan Fowler
 Eleanor Fox
 Ann B. Fragala
 Renate Franco
 Ernst and Elfried Frank
 Foundation
 Susan Frank
 Shawnee Frantom
 David Frattaroli
 Joy Freda
 Debbie Freedman
 Kathryn Freiberger
 Ziva Freiman
 Sandy Fricks
 D. Fried
 Michael Friedl
 Cheryl Friedman
 Susan Frising
 Andrew Fu
 Joanne Fuller
 Fusion Hair Color Bar
 Charles Futrell
 Cornelia Futterman
 F. Gaitan
 Kyle Galbraith
 Susan Galicki
 Lois Galvin
 Ralph J. Gangemi
 Julie Gann
 John Gannett Jr.
 Robert Garbacz
 Nathan and Patricia Garland
 Craig Gaw
 Gerald and Leslie Geist
 William Genco
 Molly Gennaro
 Maxine Gensior
 Betty Gerrard
 Steven Geyster
 Anita Ghilardi
 Ghiselin Foundation at Kitsap
 Community Foundation
 William Gibbons
 Sharron Gibson
 Michelle and Kim Gielarowski
 Julie Giesie
 Tim Gilderbloom
 Daryl and Kathryn Gilmore
 Irma Gilmore
 Lona Gilmore
 Diane Gilroy
 Susan Giordano
 Anthony Giustini
 David and Lorna
 Gladstone Foundation
 Jane Glass
 Lauren Gleason
 W. Kearney Glenn
 James P. Glennon
 Norman Glick
 Mr. and Mrs. Michael
 Glosserman

Edwin Gold
 Paul Goldman
 Drs. Kimberlee and Douglas
 Goldsmith
 Irwin Goldstein
 Pamela Goldstein
 Marilyn Goodland
 Myra and Drew Goodman
 Arlene and Karen A. Gordon
 Barbara Gorecki
 Tom Gould
 Kalathur and Geetha
 Govindarajan
 Elaine Gray
 Ita Greaney
 Ricardo Green
 Eleanor Greenwood
 Marie Gregory
 Patrick Grenier
 Janina Griffin
 Monique Griffin
 Gary Groneweg
 Holly and Tom Groos
 Howard and Joan Gross
 Alexandra Guenther
 Karen Gupta
 Leonard Haberbosch
 Janis Hall
 Elizabeth Hamberry
 M Hamilton
 The John and Susan Hammel
 Family Foundation
 Hayes and Karen Hanley
 Alfred Hanson
 Helen Hanwit-Arney
 D. Hardee
 Gerrie Hardyman
 Dodi Harms
 Christine and Dick Hart
 John and Anna Hart
 Judy Hartman Charitable Fund
 Jim Hartmeister
 Carolyn and David Hartner
 John and Nancy Hartung
 David Hayes
 The Ellie and Les Hayt Family
 Foundation
 Mathias and Cynthia Heck, Jr.
 Carolyn Hedlund
 Elaine Heerlein
 Linda Hegedus
 John Heisch
 Mickey and Dennis Henderson
 Peter and Lynn Hendricks
 James Hendrickson
 Mary Hendrickson
 Robert Hengstenberg
 Nancy Henley
 Roger Hess
 Cindy Hesselroth
 Tara Hessert
 R. Bruce Hezlep Family
 Foundation
 Ellen and Robert Higgins
 Henry Hilbert
 Christine M. and Paul Zack Hill
 Cindy Hill
 Gregg Hill
 Barbara Hinds
 Charlotte Hines
 Janis Hirsch
 Frances Hitchcock
 Janet Hixson

Janet and Kenny Hoffman
 William Hoffmann
 Douglas Hoffmeyer
 Ralph Hofheins
 Suzanne Holbach
 Heidi Holden
 Danforth Hollins
 Ellen Holloman
 J. Holmes
 Valerie Holmes
 Susan Holtzman
 Wendy Home
 Jo Hood
 Hooley Family Fund
 Kathleen M. Hoover
 Gary Hopkins
 Barbara Hopper
 Walter Horlacher
 Linda Horton and Robert
 Grimshaw
 Donna and Jonathan
 Houghton
 Jim and Jan Hovda
 Verna Howard
 Bertie Howell
 Carol J. Hubbard
 Susan Hubbard
 Mark Huber
 H. Glenn Huddleston
 Carol H. Huether
 Susan Hufford
 John Hughes
 David Humphrey
 Mary Hunkeler
 Brock Hunsaker
 Linda Hunt
 Linda Susan Hunt
 David Hunter
 Nancy Hunter
 Judy Hurley and James J.
 Hurley III
 Donald Husmann
 Carlene Hutchens
 Bonnie Hyman
 Jack Intrator and Debrah
 Welling
 Teresa Ittner
 Yvonne Jackson

Judith Jacobson
 L.C. and Margaret Jacobson
 Memorial Foundation
 L. C. Jacobson Foundation
 Jane and Robert Janicki
 Patricia Jenkins
 Cathy Jennings
 Elizabeth Jennings
 Keith and Beverly Jennings
 Hans Jepson
 Wanda John
 Carol Johnson
 Carolyn Johnson
 Earlene Johnson
 Joanne Johnson
 Judy Johnson
 Michael R Johnson
 Phyllis Johnson
 Reid Johnson
 Trevor and Robin Johnson
 Wendy Johnson
 David and Sharon Jollie
 Darla Jones
 Jenda Jones
 Patsy Jones
 Phyllis Jones
 Arlene Jordan
 Andrea Joyce
 Andrew Judelson
 Susan Kahn
 Pauline Kalenik
 Joseph Kalista
 Kitty Katz
 Catherine Kayser
 Bruce Keir
 Susan Keleher
 Johanna Kelleman
 Arleene Keller
 Ingrid and Guy Keller
 Margaret Keller
 Suzy Keller
 Molly Kelley
 Michelle Kellner
 Alan and Carol Kelly
 Barbara Kelly
 Margaret Kelly
 Peggy Kemp
 Sandra Kennedy

**What's your
 favorite
 thing about
 your guide
 dog?**



"Ned is a calm, lovable, fun-loving dog. I take excellent care of Ned, and he takes excellent care of me in return."

— Doug & Ned

Tony and Fran Kerchner	Alice Lin	Vanessa McLean	Jill Neely
Dennis Kern	Ronnie Line	The McLean Foundation	Greg Nelson
Janet Kern	Bei and Feng Ling	Ruthie McNeil	Iris Nelson-Schwartz
Leona Kern	Irv Lipschutz	Patricia McWilliams	Brett and Denise Nemanich
Murray and Jeanie Kilgour	Kathleen Lisak	Hannah Jordan Medina	Kathryn Nepote
Robert Kimball	Susan Listwan	Robert Meier	Charlotte Prescott Newton
William King	Anne Lloyd	Joel Meisel	Cindy Newton
Charles and Marsha Kinnamon	Loeb Family Fund No. 2	Melanie Kogan and	James Newton
John E. Kirzl	of The Pittsburgh Foundation	Scott Mellis	Jessie Ngai
Christine Klein	Nancy Lohr	Lawrence V. and	Edythe Nimick
Derek Kleinow	Janette and David Long	Jane Mendelsohn	Cathy Nissley
C. Klinck	Joe and Judy Lothrop	Michele Menzi	Steven Scott Nolder
Luther Kneece	Samantha Loucks	Suzanne Merrill	Dorothy Novak
Lisa Knight	Shelley Louderback	Peter Merry	Maria Novak
Judy Knowles	Lee David Loughnane	Metzger-Price Fund, Inc.	Helen Nover
Merrily Kobashi	Sally Lovejoy	Linn Meyer	Linley Oberman
William Koehler	Lynne Lovell	Teri Meyer	David O'Brian
Linda Kohn	Penelope Low	Robert Meyerhoff	Brett and Jessica O'Brien
Kokot Family Charitable Gift	Julie and Israel Lowy	Lois Milicich	Terri O'Brien
Fund	Sheila Lucas	Cheryl Miller	Bernadette O'Connor
Jennifer Kolber	Richard and Sandy Ludwick	Gayle Miller	Cheryl and Michael O'Connor
Ann Kong and Jane Pao	Mary Lunt	Gene Miller	Scottie Odle
Allan Koptish	Anita Lutkus	Jeffrey and Jeanne Miller	Cathleen Oehme
Terry Korpinen	Robert Lynch	Kenneth Miller	Alice O'Halloran
Michael Koscielski	Kelsie Macfadyen	Robert Miller	Milton Ohringer
Dennis Koskey	Joanne Mackewicz	Cattaraugus Region	Cynthia N. and Eugene Oliver
Joanne Kosloff	Joy Macqueen	Community Foundation -	Thomas Oliver
Richard Kourbage	Christina Madden	Mildred Milliman Fund	Cecelia Olives
Lea Koussoulis	Therese Madden	Susan Mills	Leslie O'Loughlin
Jill Kovacich	Patricia Majerus	Doreen Mirante	Mary and Daniel Oonk
Laura Kozel	Shiyoe Malinasky	Harold Mishmash	Ms. Randee Rothman and
Susan Kramer	Mark Manion	Carol Miskill	Ms. Wendi Orlando
Brian Krebs	Archie and Olivia Manning	Ken Mitchell	Deborah O'Rourke
Mark Kreter	Mark Manthey	Jacqui Modesti	D. Osterheld
Karen Krieger	Jeffrey Mariani	Margaret Modglin	GEB Club at OSU Members
Day Kroluk	Linda Marino	Amir Mohabbat	Brendan O'Sullivan
Phyllis Kruckenberger	Carol Marker	Capt. John Monaghan	Sue Ouellette
Elita Krums Kane	Miles Marsh	Jay Monroe Memorial	John Ozolek
Ronald Kuenkler	Steve Marshall	Foundation	Christopher and Christina
Josine Kummetz	Gary Martens	Carol Montgomery	Padilla
Sandra Kupras	Elizabeth Martin	Elizabeth Moody	Vicki Palmore
Robert Kusnick	Keith Martin	Barbara Moore	Paul Parker
Miemie Kyaw	Sandy Martin	Donna Moore	Linwood and Trudy Parker
Beth Kynerd	Anthony Martuccio	Sarah Moore	Charitable Fund
Robert Lambert	Katherine Martyn	Mary Jo Morandini	David Parkinson
Diane Lane	Carol Mascioli	Pamela Morgan	Kristine and Charles Parrish
Susan Lang	Debby Massa	Jennifer Morrell	Lisa Pasquale
Marvin P. Langanki	Nancy Massa	Michael and Chanie Morris	Linda Patrick
William and Pam Langley	Mark Massarella	Bonnie Mortag	Hugh Patterson
Christi and Ted Laseter	James Matthews	Karene Morton	James and Arlene Payne
Jerome Lawson	Kade Matthews	Vicki Mote	Paul Payne
Robert Lawson	Don Maupin	MTC Property Management	Stanley Pearlman
Robert Leach	Janet May	Julie Mulgrew	Karen Pederson
Linda Leamon	Debra Mayo	Theresa Mullin	Carolyn Pedone
Joseph Leaniak	Robert and Kim Mazur	Hobie Murnane	E. Peebles
Cheryl Lee	Janet Mazarella	Maria Murphy	Pendleton Charitable
Diane Lee	Paul Mc Clintock	Barbara Murray	Gift Fund
Joann Lee	Hugh McAfee	Helen Musk	Frank Peretti
Cynthia and Andy Lees	Mary Ann and Gerrold	Janet E. Muyskens	Larry Perkins
Marcia Lefkowitz	McCammon	David and Inez Myers	Albert Perri
Arthur and Jessica Leibowitz	Dianne McClelland	Foundation, a supporting	Sara Perry
Marcella Lentsch	Linda McCorkle	foundation of the Jewish	William Persampieri
Marjorie Leonard	Melissa McCorkle	Federation of Cleveland	Laurie Pertile
Kenneth and Robin Leopold	Florence McCullough	Maizy Myers	George and Cynthia Petrow
Nancy Lester	Dagmar McGill	Patricia Myers	Catherine Pfeil
Nicholas Levinsky	Michael McGoldrick	Marla Nagel	R. Clark Pfluger
John Lewey	John and Lois McGraw	Jennifer Nair	Daniel Phelan
Karen B. and Darwin A. Lewis	Mr. and Mrs. Richard McGregor	Anthony Naples	Arla Phenicie
Imogene Lewis	Sarah McIntyre	Andrew Nappi	Robert Phillips
Jeanne Lewis	Harold and Daisy McKamish	National Financial Services	Amos and Tami Pike
Nury Lewis	Anne McKenna	National Society of the	Mathias Piskur
Marc Lifset	John McKeon	Southern Dames	Brenda Pittler
Jorge Limon	Monty McKinley	Martin Nazzoli	Cheryl L. Pitz

Lois Placke	Elizabeth Roberts	The David and Marilyn Scott	Ross Staffhorst
Monica Platt	John Roberts, Jr.	Charitable Fund of the Ayco	Glenn Stambaugh
John Plavetich	Dawn Robertson	Charitable Foundation	James Stamer
Carolyn Pogar	Catherine Robinson	Suzanne Scranton	Harold D Starling
Sam and Denise Polakoff	Charles Robinson	Cindy Scudder	Rosemary Stauffer
Daniel Polaski	Jim Robinson	Robert Seale	Sharon Stealey
Sheryl Polese	Joe and Maggy Robinson	The Seattle Foundation	Maureen Stefanick
James Porter	Zed Robinson Jr. and	Kristen Seddon	Dennis Steger
Dick and Sue Porth	Christine Robinson	Lewis Seiler Jr	Carolyn Stegmann
P. Posk	Christina Robleto	Todd Semanco	James Steinke
Posner - Wallace Foundation	David Rock	Peter Serdaru	Donna W. Stemper
Carol Postell	The John A. Rodger Jr	Monica Sesko	Robert Stephen
Mark Powell	Foundation	Powell and Bonnie Seymour	P. Stephenson
Judith Pray	Daniel Rodgers	Alicia Shaeffer	Norman Stetson
Maureen Previti	Joanne Rodgers	Judy Shaffer	Frances Stevenson
Millie Priddy	Sharon Rodgers	William J. and Susan Shaffer	Sandra Stewart
Aaron Priest	Sandra Rodolf	Dick and Richard Shafner	Ward Stiles
Edgar Pritchard	Ron Rohde	William Shanks	Linda Stohon
Linda S. and Michael Purvis	Mr. Thomas Rollins	Madeleine Shaughnessy	Nikki Stokoe
Douglas Pushnack	Lilian H. Rooney	Jay Shaw	Ralph Stone
Sharon Quarcini	Bridget Roots	The Shaw Family Foundation	Graham Stovall
Roberta N. Quiat	Anne Rorimer	Moiria Shea	Hayes and Patricia Stover
Rose Quinn	Daniel Rosen	Debra Shearer	Marjorie Strelzyn
Robin Quirk	Mel Rosenfeld	George and Olivia Sheckleton	JoAnn Striewig
Richard Rabe	Michele Rosenmutter	Ruth Shepard	Judith Stupar
Eric Rafalski	Connie Rosenthal	Pat and George Shepherd	Pamela Stutterheim
Nestor Ramirez	John and Karen Rossetti	Paula Sheppard	Linda Sullivan
Chuck Ranberg and	Deborah Rossi	Brenda Sheridan	Rosanne Summerville
Bob Fisher	Myrna Rubenstein	Jeff Shetzich	Weilin Sung
Linda Randell	Arline Rubin	Stephen Shewbrooks	Kathleen Suosio
Deborah Ranker	Ann Ruchhoft	Anne Shinn	John Sweeney
Aswath Rao	Elaine Rudder	Ashlyn Shires	Gerald Swope
Joanne Ratchford	Shelley Rudge	Gerald B. Schreiber Foundation	Junius B. Swygert Jr.
Douglas Ratcliffe	Jay Rudolph	Judith Shubert	John M. Sykes
Alvin Ravenscroft	Mary Ruffo	Anne Sibbald	Jon Gregory Taffer
Vincent Reale	John Rufi	David Siddons	Nicolaos Tapazoglou
The Redgate/Finnegan	John Runk	Karen Siders	Marie Tapp
Charitable Fund of the Ayco	Michael Russell	Jennifer Sierra	Christy and Ken Taucher
Charitable Foundation	Carol Rust	Peter and Jean Signori	Donor Advised Fund of
Deborah Redondo	Winthrop Rutherford	Susan Silbermann	Central Carolina Community
Sandra Reed	Jeanne Ryan	William and Sylvia Silberstein	Foundation
Beverly Rees	Peter and Nanette Ryerson	Foundation	Lois Ruth Taylor
Florence Reese	Safebuilt Insurance	Ellen Silvia	Tedesco
Deborah Reher	Services LLC	Kathy Simmons	Mark and Julie Tedford
Reid Family Charitable Fund	Floyd W. Safford	David Simone	Virginia Teitman
Donna Reimer	Patricia Saisselin	Gary Simpson	Tricia Thaxton
Barbara Reining	F. Salerno	Candace Sinclair	Donald Thebeau
Jeanne Reiser	Sal's Giving Fund	Rebecca and Mary Singer	Thomas Thomasma
Nancy S. Reish	Lorraine Samuelson	Elaine Sirak	Annie and Bob Thompson
Trudy Remmick	Jeannine Santora	Gilbert W. Siron Charitable	Charitable Fund
Julie Rendina	Vanessa and Suhas Sarathy	Foundation	James Thompson
Mathew Reno	Marilyn and Jay Sarles	Site Design Consultants	Laura Thompson
Jan Reuter	Julie Saunders	Elizabeth Skarnulis	Sandra Thompson
The Reutzel Foundation	Dianne Saurenman	Harold Skolnick	Barbara Tomek
Jeanie Rhodes	Gloria Scardino	Christie Small	William Totten
Janet and Thomas Rice	Scott and Jeanne Scesney	James Smith	Robyne Townsend
Peggy Rice	Sandra Schantz	Ken Smith	Diana Traegler
Phyllis Richert	The Robert M. Schiffman	Linda Smith	Jennifer Trainor
Marcia Riester	Foundation, Inc.	Marge Smith	MC. Trefaller
Douglas and Susan Riley	Robert Schlegel	Mary Smith	Gail Triggs
Stuart Ring	Arthur Schmidt	Phyllis Smith	Trainity Treasure Team
Carolyn Rini	Erik Schot	David Sokol	John Troutman
Bruce Rinne	Ethan Schrader	Elaine Soldi	Mary Trovato
Christin Ripley	Mary P. Schreiber	Sarah Sommers	Melinda and Michael Trovini
Jane Ritchie	Schulman Foundation	Richard Sorg	Cathy Trumbull
Joseph Ritorto	The Susan and Ford Schumann	David Sorley	William Tucker
Gillian and Peter Rittmaster	Foundation	Sandra Spedden	Kara and Bryan Tulley
Gretta and Barkley	Evelyn Schwager	Richard Spilberg	Margaret and Kenneth Turner
Ritzenthaler Fund at the	Jo Schweinle	Arlene and Bert Spilker	Terri Turner-Marse
First Community Foundation	Susan and Ronald Schweizer	Susan Spinucci	Sue Tyrone
Partnership of Pennsylvania	Rudolph Scialo	Suzanne Spitzer	Stephen Ucko*
Thomas Rizzo Jr.	David Scott	Marilyn Sponzo	Friends at United Way, Inc.
Carol Roach		Elizabeth Stadler	Marilynn Unruh



WAYS TO GIVE

Any donation
is welcome!



Special opportunities to support our mission include:

\$500 to \$2,000	Personalize a leaf or stone from our “Honor Tree” for a beloved pet or person.
\$1,000 to \$2,500	Dedicate a cute paw on our “Paws of Fame” wall to honor a loved one.
\$5,000	Special Name a Guiding Eyes puppy and follow their journey.
\$10,000	Sponsor the On-Campus or Home Training of a guide dog team.
\$50,000	Sponsor a Guiding Eyes handler-guide dog team, from breeding through training.
Pathfinder Society	Become a Pathfinder by including Guiding Eyes in your estate plans.

Visit guidingeyes.org/give-today for more information.

Marianne Vakalis
Barbara Valocik
John Van Buskirk
Robert Van Der Wateren
Judith Van Rensselaer
Hall Van Vlack
Debbie Vandevor
Elizabeth Varriano Marston
Andrea Vasquez
Patricia and James Verdon
Judy Verwiell
Anthony Vitale
Valerie Vlaskovich
Gisela Vogentanz
Dawn Voigt
Kathy Vollano
Larry Wahala
Jeannette Wahlen
Robert J. Waldeck
Waldman Family
Charitable Fund
Carol Waldron
Kate Walker
Patricia Walker

William Wall
William Walsh
Patricia Warner
Mark Watowich
Carolyn Weaver
Jennifer Webb
Rachel Wegter
J. Weinstein Foundation, Inc.
Mary Jane Weiskopf
Gregory Weiss
Joann and Richard Weiss
Jeffrey M. Welsh
David Wentz
Lynne Weston-Pontikes
WestRock Tax and Consulting
William Whaley
Marie Wheeler
Bobbie White
David White
Herb and Gayle White
Paula White
Sean and Erin White
Betsy Whitmore
Kenneth Whitney

Mary Whittington
Scott and Colette Wiest
Karen Wiggins
Sue Wilkinson
Charlene Williams
Joy Williams
Michael Williams
Odette Williams
James Wilson
Kathleen C. Wilson
Sylvia Wilson
The Wings Up Family
Foundation
Douglas and Mildred Winter
Elaine Wisniewski
Marshia Witting
Joanne Woida
Polly Wojnaroski
Adam Wolfson and
Dana Oliver
Catherine Wondoloski
William Wright
Bonnie Wyatt
Charles Wymer

Chul Yang
John Yanni
Charlotte Weidaw and
Franklin Yeager
John Yoder and
Beatrice Leyba
Joseph Young
Penelope Young
Krystal Zahniser
George Zakielarz
Henry Zakshevski
Mary Zampino
Sara Zeigler
Charles M. and Esther Zell
Foundation
Vahe Zeroonian
Yiping Zhong
Patricia Zima
Cathy Zimmerman
Kim Zinszer
H.A. Zisson
Bea Zizlavsky
Harry and Erla Zuber
Neal Zung

Lions Clubs

Aberdeen Lioness Lions Club
Alfred Lions Club
Amherst Lions Club
Armonk Lions Club
Attica Lions Club
Ballston Spa Lions Club
Foundation
Belfast Lions Club
Bloomfield Lions Club
BMW Lions Charity
Brookfield Lions Club
Brookville-Timberlake
Lions Club
Chesterfield Lions Club
Clark Lions Club
Colchester Lions
Charities Inc.
Cold Spring Lions Club
Dansville Lions Club

Deposit Lions Club
East Aurora Lions Club
Essex Lions Charities Inc.
Fairport Lions Club, Inc.
Fallsburg Lions Charities Inc.
Fulton Lions Club
Glens Falls Lions Clubs
Goshen Lions Club
Green Valley La Canoa
Lions Club
Hadley-Luzerne Lions Club
Hampton Bays Lions Club
Hebron Lions Charities
Hyde Park Lions Club
Lake Placid Lions Club
Lakeland Lions Foundation
Lions Club of Olcott
Lions Club of Pleasantville
Lions Club of Sodus

Lions Club of St. Louis,
Southside
Lions Club of Valhalla Charities
Inc.
Lyme-Old Lyme Lions Club
Medina Lions Club
Montville Mohegan-Pequot
Lions Club
Mt. Lebanon Lions Club
Newtown Lions Club
Norshaft Lions Club
Northern Columbia
Lions Club
Ormond Beach Lions Club
Foundation
Ovid Willard Lions Club
Palmyra-Macedon (Pal-Mac)
Lions Club
Pine Bush Lions Club

Plainfield Lions Club
Port Orchard Lions Club
Powhatan Lions Club
Rondout Valley Lions Club
Schuylerville Lions Club
Seymour Lions Club
Solvay Geddes Lions Club
Tolland Lions Club
Town of Wright/Schoharie
Valley Lions Club
Tri-Valley Lions Club
Tuckahoe-Eastchester
Lions Club
Warwick Lions Club
Washington Heights/Inwood
Lions Club
Waterford Regional
Lions Club
Woburn Host Lions Club

In-Kind Gifts

DIFF Charitable Eyewear
Jolly Pets

Nutramax Laboratories, Inc.
Nylabone Products

Pilots to the Rescue
Ruffwear, Inc.

The Kong Company

Matching Gift and Employee Giving Programs

3M Company
Abbott Laboratories
AbbVie Inc.
Accenture
ADP
Aerojet Rocketdyne
Agilent Technologies
AIG
Airbus Americas, Inc. P.A.C.
Aldi
Ally Financial Inc.
AMC Networks
American Express
America's Charities
AmerisourceBegen
Amica Mutual Insurance
Company
Anchor QEA, LLC
Anheuser-Busch
Apple Inc.
Applied Materials
Arch Insurance Group, Inc.
AstraZeneca Pharmaceuticals
AT&T
Autodesk Foundation
Bae Systems, Inc
Baird Foundation, Inc.
Bank of America
Bayer
Becton, Dickinson and
Company
Benevity
Benjamin Moore Paints
Best Buy Foundation
Blackbaud, Inc.
Blackrock
Blue Owl Capital
BMO Financial Group
BNP Paribas
BNY Mellon
Boeing
Bonterra Tech
Boston Scientific
Bright Funds Foundation
Brightspeed
Broadcom
C.F. Martin & Co., Inc.
C.H. Robinson
Cambia
Cardinal Health Group
CarMax
Caterpillar
CBRE
Cencora, Inc.
Charities Aid Foundation
Charity Gift Certificates
Chevron
Chubb Insurance Group
Cisco Systems, Inc.
Citizens Charitable Foundation
City National Bank
Comcast

Con Edison
ConocoPhillips
Corebridge Financial
Corning
Costco
Coursera
CVS
Davis Polk
DaVita
Deutsche Bank
Discover Financial
DocuSign
Duke Energy
Eaton Corporation
Ecolab
ECS Tech
Edward Jones
Elevance Health
Empower Retirement LLC
Enact Mortgage
Equinix, Inc.
Erie Insurance Co.
Eversource Energy
FacstSet
Fitch Group
Fluor Corporation
Freeport
GAF Materials
Gates Industrial Corporation
General Electric
Genworth
Getty Images
Give Lively Foundation, Inc.
Givinga
GivingForce
Givio
Goldman Sachs & Co.
Google, Inc.
Green Bay Packers
Gulfstream
Hanover Insurance Group
HCA Healthcare
Hershey
IBM Corporation
IDEXX Laboratories
Illinois Tool Works, Inc.
IMF
Insperity
Intel
Intuit, Inc.
JCPenney
JK Group, Inc.
John Deere
Johnson & Johnson
Johnson Controls, Inc.
JP Morgan Chase & Co.
KeyBank
L3Harris Technologies
Lawrence Livermore
Lenovo
LexisNexis
Liberty Mutual Group, Inc.

London Stock
Exchange Group
Loring Wolcott & Coolidge
Lumen
Macy's
Manatt, Phelps & Philips LLP
Marsh & McLennon
MassMutual
Master Lock
Mastercard
McDonald's Corporation
McKesson Foundation
McKinsey & Company
Medtronic
Merck
Microsoft
Mondelez International
Foundation
Morgan Stanley & Co.
Moss Adams
Munich Re America
Services, Inc.
Mutual of America
National Nail Corporation
Nationwide Insurance
NetApp
Network for Good
New Balance Athletics, Inc.
New York Life Insurance
Company
Newport News Shipbuilding
Nike
Nordson Corp.
NRG
One Main Financial, Inc.
Oracle
ORIX Foundation
Paramount Staffing
Management
Parker Hannifin
Paypal
Penguin Random House
Pentair
PepsiCo
Pfizer, Inc.
Pitney Bowes, Inc.
Pledgeling Foundation
PNC
PPG Industries
Preformed Line Products Co.
PricewaterhouseCoopers
Progressive Insurance
Prologis
Prospect Hill Foundation
Prudential
PTO Exchange Inc.
Pure Storage
Raytheon
RBC Capital Markets
Red Hat, Inc.
Regeneron Pharmaceuticals
Roblox

Rockefeller Matching Gifts
Program
Safebuilt Insurance
Services LLC
Salesforce.org
Samsung Electronics
Santander Holdings
Savant Capital LLC
Service Now
Shell Oil Company
Sherwin-Williams
SS&C Technologies
Standard Insurance Company
Stanley Black & Decker, Inc.
Starbucks Corporation
State Street
Steris
Subaru of America Inc.
Symetra Life Insurance
Synchrony Financial
T. Rowe Price
Takeda Pharmaceuticals U.S.A.
Tapestry Foundation
TD Bank Group
TEGNA Foundation
Textron
The Clorox Company
The Hartford
The Home Depot
The Humana Foundation
The Walt Disney Company
Thrivent Choice
T-Mobile, USA
Toyota
Travelers Insurance
U.S. Bank
UBS
Union
Union Mutual Fire
Insurance Company
United Airlines
UnitedHealth Group Inc.
Varian Medical Systems, Inc.
Veridigm Inc.
Veritas Technologies
Verizon
Vertex
VISA, Inc
VMLY&R Foundation
Voya Financial
Wells Fargo & Company
WestRock Tax & Consulting
William Blair & Company, LLC
Workday, Inc.
Wyndham Hotel Group, LLC
Xcel Energy Foundation
Yahoo
Zoetis
Zyn Cares Fund

Guiding Eyes is grateful to the more than 250,000 generous individuals who support us throughout the year. We have made every effort to ensure the completeness and accuracy of this list. However, if you notice an error, please accept our sincere apologies and notify us at info@guidingeyes.org.

Pathfinders



Our Pathfinder Society exists to recognize friends who have remembered us in their estate plans.

Becoming a member of the Pathfinders is a beautiful testament to your dedication, and it comes with heartfelt tokens of our appreciation — including updates on a pup you help to support. You'll also be invited to special events and gatherings in your area.



Estate of Janet Renee Abernathy*

Jane Adams
Mr. and Mrs. Ronald E. Ahlers
Ms. Nell M. Alger
Mrs. Cynthia Y. (Byron) Allen
Dr. Julie Ann Allender
Jennifer and Brian Alves
Christine G. Anastos
Mr. Donald J. Augustin
Susan B. Bailey
John Baker
Mr. L. Eddie Ball
Chris Ball
Mr. and Mrs. Stephen W. Barker
Mr. and Mrs. George E. Bashaw
Lana Bauman
Ms. Gayle Becker
Ruth Begany
Jeffrey Benario and Kathy Flood
Jennifer Bennett-Yafanero
Ilene Berger
Sandra Bernstein*
Gail and Charles Bisgnano
Ms. Linda Blakely
Ms. Janice Blanton
Gail Marie Blosser
Alida Bockino
Susan Bogin
Mr. and Mrs. Nathan J. Bolognini
Judy Bon
Anita Bonanno
Ms. Ardis Bourland

William J. Brand
David T. Brandt
R. F. Breuer
Brad Brieman
Kathleen Brodzik
Ann D. Broekhuizen
Barbara A. Brunner
Patrick Bucher
Mr. and Mrs. Michael Buckley
Susan Budin
Richard and Pamela Burke
Gail M. Burris
Donald R. Byrd
Brian and Pamela Canham
Tabitha (Annie) Carini
Mr. and Mrs. Ramon V. Carli
Mark and Anne Carron
Linda M. Cartwright
Barbara Castellano
Cindy Chamberlin
Ruth Chase
Barbara A. Cicalese
Judith and Warren Clark
Mr. Armand Cohn
Anna Conklin
Linda Cooper-Moriarty
Rocco and JC Cornacchia
Mr. and Mrs. Tom Cote
Cindy Cravitt
William R. Crawford
Francis G. and Timothy P. Crawford

Dianna Crocker and Michael Nash	Ms. Elaine Henderson	Mrs. Sharon McKenna	Ronald Schofield
Mrs. Deidre H. Crofton	Jane Hettesheimer	Judy and Neal McKinley	Leslie and Jerry Schratz
Maria Curreri	Miss Carole J. Higgins	Cheryl McKy	Mr. and Mrs. Richard Schroeder
Eileen M. Curtin	Fae L. Hoffman	Mr. and Mrs. Richard Fisher	Richard H. Schwartz
Joseph and Paula D'Agostin	Mrs. Marie Horhota	Charles and Michelle McNutt	Diane M. Senkow
Patricia and John d'Auguste	David C. Horn	Joanne Mendes	Suzanne Shea
Linda Darico	Rebecca Horyczko	Mrs. Marcia Meracle	Ms. Kristen Shue
Jane Daugherty	Estate of Carole M. Houghton*	S. E. Metz	Ms. Sandra M. Simpson
Wendy S. David	Jim and Jan Hovda	Dr. and Mrs. Steven Milden	Linda Slavin
Ellen Davis and Myra Kaplan	Sharon Howerton	Jocelyn L. Miller	Mr. and Mrs. William I. Small
Ann Davis-Ramsey	Marianne Huber	Cindy Minalt	Donna K. Smith
Linda N. Deeter	Ms. Gail A. Hummer	Charlene Karen Mitchell	Kathy and Jeff Smith
Karen Delisle	Janet Humphreys	Angela DeVietro and Judy Mitchell	Anne C. Smith
Mr. Michael DellaRipa	L. A. Hunt	Gloria A. Moak	Kathy and Jeff Smith
Angela Devietro and Judy Mitchell	Gunilla Isaksson	Michael Moraca	Terri Pigue and Ralph Sole
Brian and Pamela Canham	Dory Israel	Sarah and Jonathan Mugal	Suzanne Erin Murphy & Brian Sowers
John and Lynn Dillon	Lynn M. Jackson	Suzanna Erin Murphy and Brian Sowers	Estate of Marjorie Marie Sparks*
Linda M. Doster	Cathy E. Jaster	Jeanne Carol Myers	Linda L. Spicer
Ms. Jeanne Dregalla	Eileen D. Jauch	Ms. Karen M. Naja	Mrs. Carol P. Spisak
Ms. Patricia Driscoll	John C. and Nancy Jenkins	Gerri Natiello	Darrell J. Stout
Sherrie Dulworth	Lynda Jeppesen	Dr. Norman Needel	Cynthia Sullivan and Robert Rollmann
Penny Dvoracek	Mrs. Mary Alice Johnson	Mr. and Mrs. John Nelepovitz	Nancy Sutton
Ms. Joyce Egeberg	Herbert Bernard Joseph	Mrs. Margo M. Neubauer	Mrs. Karen J. Swope
Karen Eismann	David and Barbara Katz	Barbara L. Neuby	Marie A. Tarantino
Mr. and Mrs. Reid Elko	Mr. and Mrs. Michael Kelly	Charlotte Prescott Newton	Lois Ruth Taylor
Deni Elliott	Patty Kelly	Renee Normandy-Shane	Vickie Thomas
Ms. Dianne M. Ende	Arlene and Michael Kelly	Darlene L. O'Connell	Estate of Albert F. Todd*
Bob and Ruth Escher	Charles J. and Nancy Kennedy	Michael and Sheryl O'Connell	Jill T. Tracey
Norman and Susan Fainstein	Tony and Fran Kerchner	Brian O'Day	Anne Travalia
Heidi Farnham	Ms. Joanne Kish	Ms. Laura Oftedahl	Ms. Marylou Tripolino
Lee Fatell	Janet F. Kleiner	Bob Oldham	Ms. Darlene J. Turner
Karen Fiebig	Carol and Bruce Koch	Barbara Pajak	Vicki M. Tyler
Carmen Figueroa	Flora Kowal	Jerry A. Parish	Steve Varvaro
Susan Finn	Daniel Krakovsky	Jay Patyk	Norma J. Violante*
Mr. and Mrs. Richard Fisher	Hildegard Krause	Elizabeth Penn	Michaelene J. Wadolny
Ms. Sally J. Fisher	Kenneth Laban	Timothy Peterson	J. Rachelle Walker
Gail Ann Fisher	Larry and Ruth Ladd	Terri Pigue and Ralph Sole	Tom* and Mary Lee Walton
Maureen Fitzgerald	Mrs. Shirley Laird	Cheryl L. Pitz	Cheryl and Basil Wankewycz
Ethan Flint	Mr. Marvin P. Langanki	Ruth E. Pollow	Mrs. Loretta Warsaw*
Estate of Mary Lou Foley*	Mr. Howard* and Jeanette Lasher	Anne Powell	Christine M. Washburn
Mrs. Suzanne Ford	Eric and Beverly Lawson	Angelo J. and Ellen Purcigliotti	Kurt Wassen
Rita O'Brien Sims Franklin	Dr. Rebecca R. Leas	Diana Quagliariello	Mr. Clayton Waxham
Ina R. Friedman	Ms. Carol Anne LeBlanc	Rosemary Rafter	Diane Karen Webster
Mark Fryman	Janice and Neil Levett	File under Ann Davis Ramsey	Mr. and Mrs. Michael Welt
Minnie Cobey Gallman	Christine B. Lewis	Phyllis and Don Ranum	Herb and Gayle White
Sandra Gamble	Mary Adams Loomba	Rev. David B. Rapp	Bobbie White
Ms. Margaret Gardner	Nancy S. Lothrop	Karin and Lawrence Rappaport	Herb and Gayle White
Dr. Joel Gavriele-Gold	Karen P. Lowden	Mr. Francis H. Rasmus, Jr.	Lilita K. Wier
Betty Gerendasy	M. Leona Luckason	Donna Raven	Anne Williams
Phyllis M. Gibula	Mr. and Mrs. John* Luicci	Alexis Read	Michaelene D. Willy
Frances A. Giovanetti	Peggy Nance Lyle	Ellen Rice	Estate of Anita Wilton*
Ms. Mary V. Gloss	Mr. Kurt Malison	Cynthia Sullivan and Robert Rollman	Karen J. Wiltse, COT
Stacy Mignon Glover	Michael Mallies	Miss Augusta A. Rosasco	Mr. Fred Wolter
Mr. and Mrs. James Goldman	David Mangeim	Ms. Edith Rosenfield	Judith and Winton Wood
Mrs. Marian Goodloe	Dr.* and Mrs. William L. Mangold	Sally Rosenthal	Ginny A. Wright
Mary Graefen	Judith Margerum	Cynthia* and Ken Rosenthal	Ms. Louise B. Wulff
Marsha Graves	Linda Mariotti	Mr. Leo E. Roy	Lynne Young
Margaret M. Grookett	Miranda H. Markart	Pamela Ruegg	Estate of Bonita R. Zaucha*
Tom and Holly Groos	Anna M. Markey	Joe Ruzzo	Sharon Zenger
Edmund A. Grossman	Caroline Marr	Terry and Carolyn Ryan	Estate of Eleanor Marion Ferrin Ziegler*
Carol V. Haberer	Kevin Mars	Joan-Ann Ryan-Murphy	Ms. Alice M. Ziittel
June H. Haines	Sandra Hearn Martin Foundation	Gwen Samp	
Mrs. Natalie Hall	Julie Fleming	Ms. Doris R. Satterwhite	
Sandra G. Hall	Barbara and Phillip Mathiews	Eileen Schary	
Jean Hamburg	See Karen McIsaac Contact	Ora Joan Schepps	
Mr. John K. Hammel	Diane B. McGrath	Mr. and Mrs.* Richard Schmidt	
Hayes and Karen Hanley	Karen McIsaac and Ted Mays		
Camilla Hardmeyer			
Diana Harper			
Barbara T. Hawkins			
Bonni Heitman			

* Deceased

Bequests & Trusts



Estate of Regina Abraham
 Hugh L. Awalt and Marjorie D. Awalt Trust
 Estate of Marilyn Ayres
 Second Complete Restatement of The
 BJB Trust I dated April 19, 2012
 Bruce Barber Settlement Trust
 Estate of Frederick Harlan Bear
 Betty Jane Bell Charitable Trust
 Mardelle L. Berman Irrevocable Trust
 Bradford Revocable Family Trust
 Patricia Brodie IRA
 Maude D. Brunk Revocable Trust
 Estate of Mary Patricia Brunner
 Al and Bobbie Burgett
 Joyce J. Burvenich Trust
 Canavan Family Trust
 Frank Canestraro Revocable Trust
 Estate of Reinhold Albert Carlson
 The Marian P. Carpenter Revocable Trust
 Robert C. Causton Revocable Living Trust
 Cogger-Lewis Trust
 Estate of Dr. Elizabeth Collins
 Dorothy D. Conkey Trust
 Dr. Patricia Cook IRA
 Coombs - Robbins Trust Fund
 Jean H. Crandall Trust
 Mr. & Mrs. Ronald M. Crane
 Estate of Phyllis J. Cuviello
 The Hannelore N. D'Elia Living Trust
 Terence W. Danielson &
 Nina J. Danielson Trust
 Ronald R. Davey Revocable Trust
 Estate of Rachelleann DeCoursey
 Estate of Sandra Deeble
 Estate of Joan M. DePamphilis
 Joanna DiBello IRA
 Estate of Rosemarie DiLallo
 Anne F. Doran Revocable Living Trust
 The Eaton Trust

Stuart Eisler Revocable Trust
 Estate of Sondra Elkins
 Estate of Bobbi Jean Ernst
 W. Moreland and Ruth U. Ernst
 Charitable Trust
 Residuary Trust U/W Charles S. Fiske
 Estate of Julia Forrest
 Gaynell Lee Foster Trust
 Sanford Fox Irrevocable Charitable
 Remainder Unitrusts
 Ingrid A. Frassa Trust
 Estate of Dorothy A. Frommer
 Estate of Ronald F. Furman
 E. Allen and Adelaide R. Ginkinger
 Memorial Trust
 Estate of Elaine J. Goehringer
 Joan A. Gohn Revocable Trust
 Anna Green and Frank Green
 Charitable Trust
 Estate of Mary E. Griffin
 Anne R. Gruenberg Trust
 Suzanne Guice IRA
 Lucille Gustafson IRA
 Estate of James Haas
 Hagen Family Trust
 Estate of Reginald T. Hancock
 Estate of Phyllis Louise Hartman
 Susan Hasek IRA
 Estate of Neil Hasty, Jr.
 Robert A. Heays Intervivos Trust
 Sandra Hemp IRA
 Estate of Charles B. Hendershott
 Yvadne N. Hendrickson Revocable Trust
 Margaret Henningsen IRA
 Estate of Arthur L. Hilt
 in memory of Greta De Hoop Holmes
 Estate of Roger J. Holzman
 Estate of Elizabeth M. Homik
 George Huff Trust

Ralph Hurwitz Living Trust
 Estate of Alan F. Ingram
 Mary Ann Jefferies Living Trust
 Ruth M. Jones Memorial Fund
 Beverly Kaplan Trust
 Estate of Stacy Ann Kaufman
 in honor of Cecil Williams and Orlando
 Trust of L. William Kay, II
 Estate of June B. Keizer
 Joan W. Kennedy Annuity
 Estate of Barbara J. Keyes
 In memory of Sue A. Kilgore
 Estate of John P. King
 Joan Kinney IRAs
 Estate of Lois Kirschenbaum
 Estate of Roger Krott
 Olga Krusko Revocable Trust
 Estate of Barbara Lane
 Estate of Sherrie Laughlin
 Carol M. Lehmann Revocable Trust
 Elizabeth Leonard Rould Trust
 Michele V. Lewis Trust
 Philip E. Lintner and Lois C. Lintner
 Revocable Trust
 Estate of William Lomb
 Melva A. Long Revocable Trust
 Estate of Arnold Richard Lowrey
 John and Ruth MacAnespie Charitable
 Remainder Unitrust
 Bette S. MacGeorge Trust
 Estate of Estelle Marafino
 Estate of Georgianna W. McAlister
 Estate of Jacqueline H. McCarthy
 Thomas J. Meier Revocable Living Trust
 Beverly J. Merritt Trust
 Beverly Merritt Annuity
 Elynn Merritt Annuity
 Louise F. Meyer Irrevocable Trust
 Estate of Verna S. Minehart

Susan C. Mingee Living Trust
 Estate of Rosemary Momich
 Judith Monson Annuity
 Horace A. Moses Trust
 Ruth N. Moulton Charitable Trust
 The Mueller Trust
 Mullins Marital Trust
 Estate of Carol A. Murphy
 Will of Shirley A. Nash
 I. J. Nast Trust
 In Memory of Russell and
 Barbara Nichols
 Estate of Hilda O. Nitchman
 Jean Leslie Norcross Revocable Trust
 Estate of Nancy E. Norman in
 memory of Barbara Phillips
 Estate of Barbara E. Nowaczyk
 Bonnie and Henry Nunnally
 John A. and Eileen A. O'Neal
 Charitable Trust
 M. Colyer Charitable Trust
 Margaret E. Otto Administrative Trust
 Carol Patane Schwab IRA
 Paul Patton Irrevocable Trust
 Maxine Patton Living Trust
 Estate of Marcia Perl
 Estate of Ruth Pfliegler
 Estate of N. Carleen Plaster
 Alexandra Plesha Revocable Trust
 Estate of Howard Prass
 Estate of Bette S. Ptasek
 Estate of Rhonda Purwin

Naomi K. Raber Nongrantor
 Charitable Lead Annuity Trust 1
 Shirley Rahe Estate
 Estate of Anne Lucille Rajotte
 Estate of Helen E. Reichert
 Kenneth Roberts Family Trust
 Estate of Glenna Belle Roberts
 Estate of Phyllis Rosenberg
 Estate of Lillian Maria Cornelia
 van der Stam Sacchetti
 William R. Sadler Revocable Trust
 Mary Sage Charitable Trust
 Rudolph Saracco Revocable Trust
 Estate of Patricia Schubert
 Samuel F. Scott Trust
 Donna J. Setterberg Revocable Trust
 Estate of Ronald Harry Shaw
 Shaw 2002 Revocable Trust
 Angela Smith Revocable Trust
 Kirk Smith Trust
 Willett R. Smith Annuity
 Roy S. Smith Charitable Trust
 Estate of Douglas James Spangle
 The Maxine Riganti Spencer
 Revocable Trust
 Estate of Erwin Stahl
 Robert K. Stahlberger
 Revocable Trust
 Anne R. Stanley Revocable Trust
 Grace C. Stebbins Trust
 Donald R. Storey and
 Judith M. Storey Trust

Estate of Sandra Stouse
 Estate of Michael I. Sullivan
 Eugenia V. Sullivan Revocable Trust
 Heidi E. Terlizzi Irrevocable Trust
 Estate of Mary Jane Thomas
 Irene E. Thompson Living Trust
 Rueben W. Tonn Trust
 Estate of Evelyn L. Tronca
 Erwin & Helen Tummel
 Revocable Trust
 Estate of Marilyn M. Vahlkamp
 Estate of Mary Ruth Vanneman
 Estate of Norma J. Violante
 Albert Walters Trust
 Russell D. Warner Revocable Trust
 Estate of Honora Watson
 Estate of Daniel Waxman
 Estate of Alice Weber
 Estate of Irene H. Weber
 Estate of Norma Ann Westnedge
 Estate of Grace L. Williams
 Carole A. Williams Trust
 Estate of Dorothy Arlene Wilson
 Estate of Anita Wilton
 Estate of Julie Wlach
 George H. and Mary R. Wohlleben
 Charitable Remainder Unitrust
 Norma Jean Zaske Living Trust
 Estate of Emily J. Zirkel
 Estate of Donald Zuk



Make a Big Impact With a Future Gift

By including Guiding Eyes in your estate plans, you can help us continue our life-changing work while also meeting your personal and financial goals.

Options range from a simple bequest to a gift that provides you with income for life, such as a gift annuity or trust. Guiding Eyes can assist you with sample language and other information to discuss with your financial advisor.



Visit guidingeyes.mylegacygift.org
 or contact Kathleen A. O'Reilly
 at (914) 243-4355
 or koreilly@guidingeyes.org

Financial Report for Fiscal Year 2024

GUIDING EYES FOR THE BLIND CONDENSED AUDITED FINANCIAL STATEMENTS, SEPTEMBER 30, 2024

STATEMENT OF ACTIVITIES

Public Support:	Without Donor Restrictions	With Donor Restrictions	Total
Contributions	\$ 22,165,292	\$ 2,283,728	\$ 24,449,020
Planned giving	\$ 17,591,875	\$ 200,000	\$ 17,791,875
Other income	\$ 648,068		\$ 648,068
Net assets released from restrictions	\$ 2,313,997	\$ (2,313,997)	\$ —
Total Public Support	\$ 42,719,232	\$ 169,731	\$ 42,888,963

Expenses:

Program services

Student Instruction & Dog Training	\$ 10,429,640	—	\$ 10,429,640
Client Experience	\$ 2,057,226	—	\$ 2,057,226
Veterinary Hospital	\$ 9,815,957	—	\$ 9,815,957
Canine Breeding	\$ 914,863	—	\$ 914,863
Facility & Food Service	\$ 1,425,464	—	\$ 1,425,464
Enrichment	\$ 1,841,513	—	\$ 1,841,513
Total program services	\$ 26,484,663	—	\$ 26,484,663

Supporting services

Management & General	\$ 1,181,643	—	\$ 1,181,643
Fundraising	\$ 8,391,899	—	\$ 8,391,899
Total supporting services	\$ 9,573,542	—	\$ 9,573,542
Total Expenses	\$ 36,058,205	—	\$ 36,058,205

Excess of public support over expenses	\$ 6,661,027	\$ 169,731	\$ 6,830,758
Investment income (net)	\$ 12,989,598	\$ 1,242,670	\$ 14,232,268
Other net asset adjustments	\$ 378,752	—	\$ 378,752
Net assets, beginning of year	\$ 104,521,216	\$ 8,562,722	\$ 113,083,938
Net Assets, end of year	\$ 124,550,593	\$ 9,975,123	\$ 134,525,716

STATEMENT of FINANCIAL POSITION

Assets	Without Donor Restrictions	With Donor Restrictions	Total
Cash and cash equivalents	\$ 44,417,295	\$ 2,502,094	\$ 46,919,389
Receivables and prepaids	\$ 4,232,933	—	\$ 4,232,933
Investments	\$ 55,457,560	\$ 7,473,029	\$ 62,930,589
Other assets	\$ 606,980	—	\$ 606,980
Operating Lease Asset	\$ 766,146	—	\$ 766,146
Land, buildings and equipment, net	\$ 23,494,367	—	\$ 23,494,367
Total Assets	\$ 128,975,281	\$ 9,975,123	\$ 138,950,404

Liabilities & Net Assets

Accounts payable & accrued expenses	\$ 1,260,844	—	\$ 1,260,844
Public Support Received in Advance	—	—	—
Gift annuity and other reserves	\$ 1,743,460	—	\$ 1,743,460
Bonds payable	—	—	—
Deferred 457B	\$ 606,980	—	\$ 606,980
Operating Lease Liability	\$ 813,404	—	\$ 813,404
Net assets	\$ 124,550,593	\$ 9,975,123	\$ 134,525,716
Total Liabilities and Net Assets	\$ 128,975,281	\$ 9,975,123	\$ 138,950,404

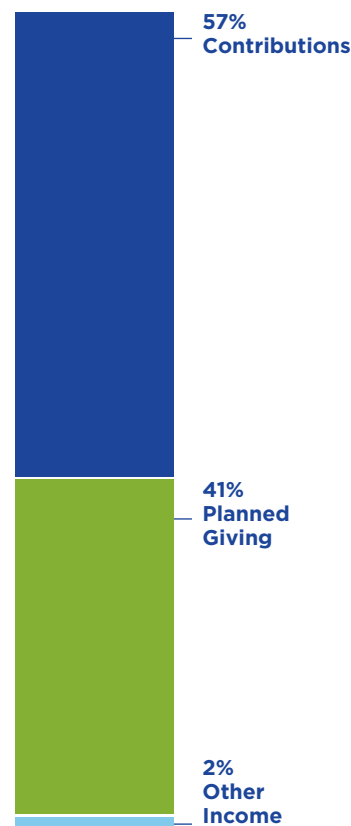
Our 990 and the above financials include our Capital Campaign. Removing this revenue and expense results in:

Total Public Support:	\$40,276,721
Total Expenses:	\$35,499,030
Program Services Expense:	74.44%
Management & General Administration Expense:	3.33%
Development Expense:	22.23%

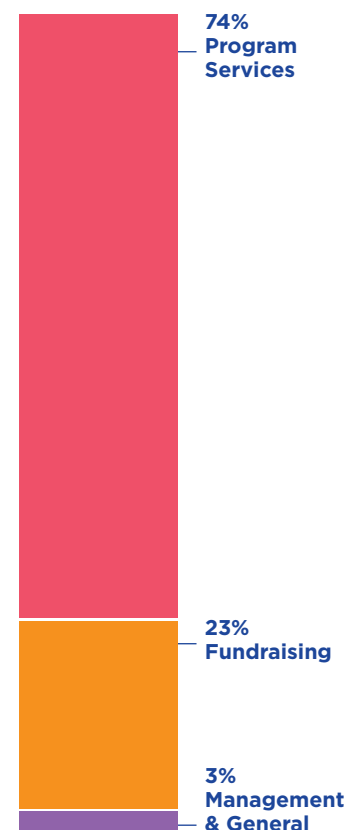
Our website, which contains the electronic financial statements, will advise the reader that such financial statements are presented for convenience and information purposes only, and while reasonable efforts have been made to ensure the integrity of such information, it should not be relied on. A copy of the printed fiscal year 2024 audited financial statements will be provided upon request.

The above condensed financials have been taken from the fiscal year 2024 financial audit performed by BDO, USA LLP.

FY24 Public Support



FY24 Functional Expenses





Our Leaders

Left to right, front row: Cory Shields, Janine Petraro, Dr. Beth Brenninkmeyer (with future guide dog Wisdom), Elena Consalvo (with future guide dog Wrenly), Myra Biblowit (Capital Campaign Committee member), Cynthia Sullivan, Laura Peterman, Patricia David, Jane C. Parker, Sue Kelsey. Back row: Eli Manning, Dr. Gaurang Trivedi, Thomas McC. Souther, William Ma, John L. Donnelly, Curt J. Landtroop (with guide dog Quincy), Eduardo Andrade, Thomas Panek (with guide dog Ten), Gerald Brenninkmeyer, Robert Miani. Not pictured: Jane Adams, Wendy S. David, David Fein, Ken Fernald, Holly Hess Groos, Andrea Redmond, Matthew E. Zames.

Board of Directors

John L. Donnelly, *Chair*
Holly Hess Groos, *Vice Chair*
Matthew E. Zames, *Treasurer*
Jane Adams, *Secretary*

Eduardo Andrade
Patricia David
Wendy S. David
David Fein
Ken Fernald
Sue Kelsey
Curt J. Landtroop

Eli Manning
Jane C. Parker
Andrea Redmond
Cory Shields
Thomas McC. Souther
Cynthia Sullivan
Dr. Gaurang Trivedi

Senior Management Team

Thomas A. Panek,
*President & Chief
Executive Officer*
Beth Brenninkmeyer,
*DVM, Chief
Veterinary Officer*
Gerald Brenninkmeyer,
Director of Training
Elena Consalvo,
Chief Development Officer

William Ma,
*Head of Technology
Operations*
Robert Miani,
Chief Financial Officer
Laura Peterman,
Chief of Staff
Janine Petraro,
*Head of Human
Resources*

A New Chapter

To raise and train more service dogs, and assist more individuals living with vision loss, we are developing a new facility: **The Guiding Eyes for the Blind Wellness & Training Center.**

This long-term process includes investments that have temporarily increased administrative expenses. However, as a result, **we will dramatically increase the number of individuals we can serve each year.**

Scheduled to open in 2026, **the Wellness & Training Center will allow us to multiply our impact,** streamline processes, reduce crowding, and improve quality of work and life for humans and dogs alike.

Guiding Eyes is making a significant financial commitment to this project. Watch for updates as we take **bold steps towards our future!**

Become a Volunteer



611 Granite Springs Road
Yorktown Heights, NY 10598

(800) 942-0149
guidingeyes.org



Guiding Eyes for the Blind
is a leading nonprofit
guide dog school with
501(c)(3) status.

Volunteers are a vital part of the Guiding Eyes community.
Ways to become involved include:

Campus Volunteers

Assist in kennels or in our offices, gather social media content, help with event planning, or serve as a brand ambassador.

Puppy Raising

Provide a home for a pup, teach them basic skills, and attend training classes with them over a 12 to 18-month period.

Foster a Brood/Stud

Provide a permanent home for a brood or stud dog.

Early Training & Socialization

Help our pups learn confidence and resilience on campus.

Home Socialization

Introduce pups to new sights, sounds, and people for three to five days in your own home.

Home Litter Care

Host a mom and litter of future guide dog puppies for up to five weeks in your own home.



Visit guidingeyes.org/volunteer to learn more.