



**Guiding
Eyes**
for the Blind

2023
ANNUAL REPORT



John with future guide dog pup JP and Thomas with guide dog Ten.

These pups were special named in honor of corporate partner JPMorgan Chase, and Board Member and supporter Eli Manning. Learn more about special naming opportunities on page 25.

Dear Friends,

At Guiding Eyes for the Blind, demand for our exceptional guide dogs is increasing. We are working hard to grow in order to meet this need. Some of the exciting plans we enacted in Fiscal Year 2023 make a difference immediately, and some take time to develop – like our new kennel facility expansion. Throughout our 70-year history, one important thing remains the same: our dedication to connecting exceptional guide dogs with individuals for greater independence.

In these ever-changing times, our talented and enthusiastic staff, volunteers and donors are working together to service more people who are blind or have vision loss without compromising what we do best: **breeding, raising, training, and pairing our world-class dogs with people who need them most.**

In this Annual Report, you'll learn how Guiding Eyes brought commitment and innovation to our tasks. With your help, we succeeded in pairing more of our beautiful dogs as life-changing gifts with individuals who are blind or have vision loss.

Our current kennel is almost 60 years old and operates at nearly maximum capacity, so **we are currently developing an expansion to accommodate even more guide dogs in training.** This two-story, 30,000-square-foot Wellness & Training Center, scheduled to open in 2026, will eventually house up to 220 guide dogs in training in a state-of-the-art space designed to promote optimal canine health and wellness.

While we grow, and as demand increases, we continue to focus on providing a full range of programs and services. We redesigned our campus dorm rooms, bringing additional comfort and safety to our On-Campus Training students. We refined the important connection between training teams and placement teams, to ensure the perfect match. Our classes became smaller yet more frequent, enabling us to provide more customized training and meet the scheduling needs of our handlers. And we increased the pace of graduations from monthly to every two weeks, so that we can continue to **build the strong sense of community that defines us.**

As a leading guide dog school both nationally and internationally, it is our responsibility to set new standards as we grow. This has been our mission since 1954: connecting exceptional dogs with individuals for greater independence. We succeed thanks to the dedication of our vast family of donors, volunteers, and puppy raisers. We fund 100% of what we do without any money from the government, and continue to provide our dogs and training at no cost to our students. We are very thankful for your support.

We're always learning together. Guiding Eyes continually strives to grow and evolve, and collaboration makes us successful. **Every person's role in a guide dog's journey – every hand that touches the leash – supports the next phase of that journey.** As a community, we all work towards our ultimate goal: independence, confidence, companionship and freedom for people with vision loss.

Thank you for coming on this walk with us.

Sincerely,



John L. Donnelly, Board Chair



Thomas A. Panek, President & CEO

OUR MISSION

Guiding Eyes for the Blind provides guide dogs to people with vision loss. We are passionate about connecting exceptional dogs with individuals for greater independence.

We believe in the powerful, meaningful change that our beautiful dogs bring to the lives of people facing the daily challenges that blindness and vision loss present.



We work out of our Headquarters and Training School in Yorktown Heights, New York; our Canine Development Center in Patterson, New York; and our Urban Training Center in White Plains, New York.

Our Puppy Raisers are located along the Eastern Seaboard, stretching from Maine to North Carolina, and west to Ohio and Colorado. Regional Guide Dog Mobility Instructors are located throughout the United States.



Guiding Eyes is an accredited member of the International Guide Dog Federation (IGDF), the organization that establishes worldwide standards for the breeding and training of guide dogs.

Table of Contents

By the Numbers	4
2023 Highlights	6
Our Programs	8
Our Supporters	14
Financial Report	28
Our Leaders	29

On the Cover

First-time guide dog user Melchion and his Running Guide, Larson, at the United States Supreme Court in Washington, DC. Hear from Melchion and other Fiscal Year 2023 graduates in our Graduate Spotlights on pages 14-21.





**Nearly 500 pups
are born annually.**

Approximately 90 percent are
Labrador Retrievers, and 10
percent are German Shepherds.



**Guiding
Eyes**
for the Blind

BY THE NUMBERS

70+

YEARS OF EXPERIENCE

Guiding Eyes has 70+ years of experience in providing guide dogs to people with vision loss.

10,000+

SERVICE DOG TEAMS

We estimate that more than 10,000 service dog teams have graduated since our founding in 1954.



1,700+

COMPASSIONATE VOLUNTEERS

More than 1,700 compassionate and dedicated volunteers are an essential part of the Guiding Eyes community.

\$50,000

FOR TRAINING & CARE OF ONE DOG

It can cost up to \$50,000 annually to train and care for a guide dog throughout its working lifetime with a person who is blind.

As a 501(c)(3) nonprofit organization, Guiding Eyes provides all services completely free of charge. Our support comes almost entirely from generous individuals and philanthropic organizations. We do not rely on government funding.

OUR IMPACT — FISCAL YEAR 2023*

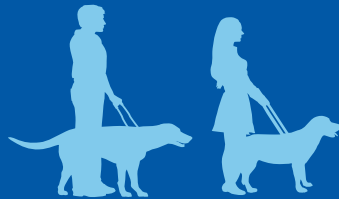
Approximately 900 Guiding Eyes dogs actively worked as service animals for people with vision loss over the past year.



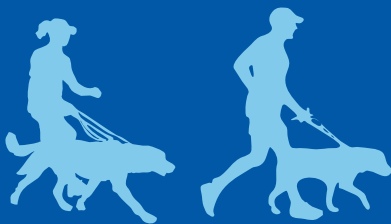
461 puppies were born:
424 Labrador Retrievers and
37 German Shepherds.

325 puppies were selected to be placed in homes with puppy raiser families.

271 dogs entered guide dog training, including 251 Labrador Retrievers and 20 German Shepherds.



150 dogs graduated from guide dog training and were paired with people with vision loss, including 145 Labrador Retrievers and five German Shepherds.
61 dogs went on to careers in law enforcement or other service organizations.



Of our 150 graduate teams, 24 teams were Running Guides, and 17 of the teams received Specialized Training.

47% of graduates were new to our school, and 87% of those graduates, new to our school, have never had a guide dog before. 53% of graduates returned to Guiding Eyes for successor dogs.



* Training cycles may straddle two fiscal years.

2023 HIGHLIGHTS



1. Guiding Eyes rang the opening bell at NASDAQ in New York City.
2. Board Member Eli Manning hosted the 46th Annual Guiding Eyes for the Blind Golf Classic.
3. Supporters and their dogs raised more than \$100,000 in our WAGATHON.
4. Corporate partner Mastercard held a Volunteer Day on campus.



- 5. Corporate partner JPMorgan Chase & Co. held a Volunteer Day on campus.
- 6. Raisers and pups visited the American Kennel Club Museum of the Dog in New York City.
- 7. As part of National Volunteer Week, Guiding Eyes hosted a Raiser Celebration Day.
- 8. Guiding Eyes appeared on FOX5 New York as part of Giving Tuesday.
- 9. The 38th Annual Lake Waramaug Polar Bear Run raised over \$7,000 for Guiding Eyes.



OUR PROGRAMS

Genetics & Breeding

As a global leader in genetics and breeding, Guiding Eyes employs industry best practices in our approach towards continually improving the health and temperament of our dogs. Our data-driven approach, together with our partnerships with other guide dog organizations, specialists, and universities, helps to promote genetic diversity and ensure that each generation of dogs is improving over time.

Our purposefully bred puppies are born at the Canine Development Center in Patterson, New York, where they are lovingly nurtured and socialized prior to entering their puppy raiser's home.

Socialization

Guiding Eyes runs an extensive pre-training program geared at developing each pup's desire to connect with people, giving them a head start in understanding how to work with people in a positive, fun relationship.

From birth to 12 weeks, we acclimate our pups to the sights, sounds, social interactions, and early training that will maximize their potential to be a guide dog. Volunteers in our Early Socialization Program come in daily to massage our puppies from the time they are one week old, which begins building the vital relationship between the puppies and their human companions.

Volunteer Home Socializers build on early kennel socialization experiences by helping the puppies in a positive and supportive manner to become accustomed to a home environment and encouraging them to explore the sights and sounds of a busy household.

Hockmeyer Puppy Pavilion

At age 6-9 weeks, our puppies transition to spacious kennels adjacent to the Hockmeyer Puppy Pavilion.

In this fun, stimulating, toy-filled indoor and outdoor environment, pups continue to build upon the progressive lessons taught by staff and volunteers such as self-control when getting fed or picked up, settling during crate-time, and how to problem-solve and develop skills such as climbing stairs and mastering underfootings.

“ I look at these puppies and they have been bred and raised for the work of helping others navigate life, and I think helping to fulfill that destiny is worth doing. ”

— Frances,
Puppy Raiser

Journey of a Guiding Eyes for the Blind Guide Dog



▶ BIRTH

Puppies are born at the Canine Development Center in Patterson, New York.

▶ BIRTH TO 8 WEEKS

Puppies receive early training and socialization.

▶ 8 WEEKS TO 16 MONTHS

Puppies learn key skills from volunteer puppy raisers.

▶ 16 MONTHS TO 22 MONTHS

Dogs join Guide Dog Mobility Instructors in Yorktown Heights, New York to learn guide work.

▶ 22 MONTHS TO 8-10 YEARS

Dogs are matched with people who are blind, living with them as working guide dogs.

▶ 8-10 YEARS +

Dogs retire from service, living with their handler or an approved adopter.



Puppy Raising

Puppies selected as potential future Guiding Eyes guide dogs are placed in volunteer homes for 12 to 18 months.

These essential volunteers raise a Guiding Eyes puppy by providing the pup with the love, socialization, house manners, and basic obedience they will need to succeed in guide dog training. The pup's journey later continues at our Headquarters & Training Center in Yorktown Heights, New York, as they realize their full potential and train to become a world-class Guiding Eyes guide dog.

Brood & Stud Fostering

Guiding Eyes Breeding Dogs ensure the future of all our programs. They are vital to our work, and the people who provide them with homes are crucial members of the Guiding Eyes community.

Brood/Stud fosters and sitters take on the responsibility of the health, well-being, and happiness of our breeding dogs. Our foster/sitter volunteers are also our diplomats, showing off our wonderful dogs to their communities each time they leave home.



Kennel Enrichment

Guiding Eyes' extensive kennel enrichment program helps ensure that our dogs have a positive, enjoyable stay with us. We evoke our dogs' interest by exposing them to a variety of new stimuli, including community playtime together, movement, natural and artificial objects, different textures and surfaces, and puzzles and food toys.

CARING FOR OUR GUIDE DOGS

At Guiding Eyes, we are dedicated to providing excellence in veterinary care. We operate two state-of-the-art veterinary hospitals through our main campus in Yorktown Heights, New York and our Canine Development Center in Patterson, New York.

Our veterinarians, licensed veterinary technicians, and administrative staff care for dogs in the Breeding, Puppy, and Training Programs. Our vet care extends to all working Guiding Eyes dogs through remote communication and referrals, and using our own facilities when proximity allows.

Our veterinary team performs routine surgical and dental procedures, X-rays, sonograms, endoscopy, laboratory work, vaccinations, and an array of wellness services. We also work with specialists in ophthalmology, cardiology, neurology, orthopedics, and radiology, many of whom donate services to help provide our dogs with the best care possible.



“ How amazing that we can take all the joy these dogs bring to us and then share it with someone for whom it can be life-changing! ”

— Mary,
Region Coordinator &
Puppy Raiser



Our nurturing staff and volunteers provide a healthy combination of exercise and rest to stimulate our dogs' minds, enhance their lives and prevent stress during this important training period.

Training Our Guide Dogs

Dogs sent to guide dog training learn the concepts of guiding in small steps, and build upon previous lessons with many repetitions in a great variety of environments.

Dogs in training are assigned to a Guide Dog Mobility Instructor (GDMI), who will develop a relationship with the dog through play, obedience, work, and time together. Our instructors will work with each dog for a minimum of five months.

A guide dog is ready for placement with a partner when the dog responds reliably and safely to all work situations they will encounter while guiding, such as indicating a curb at street crossings, detecting and avoiding obstacles, and navigating all types of public transportation. We carefully match each guide dog with a person based on pace, pull, personality and the person's preferences.

Career-Change Dogs

Each Guiding Eyes dog demonstrates their potential career path. Only dogs showing the self-confidence and composure necessary for guide work are assigned to undergo guide dog training and placement with a person who is blind or has vision loss.



“ I’m so honored to see the relationships that are formed, not only between dogs and humans, but among classmates and instructors. It really is a community — these are connections that last a lifetime. ”

**— Melissa,
Community Outreach &
Graduate Support
Manager**

Dogs who are not selected for guide dog work often go on to other important careers as working dogs. For example, a dog with a little too much energy to settle may enjoy an active career using their nose in law enforcement. Others may become service dogs in partner organizations.

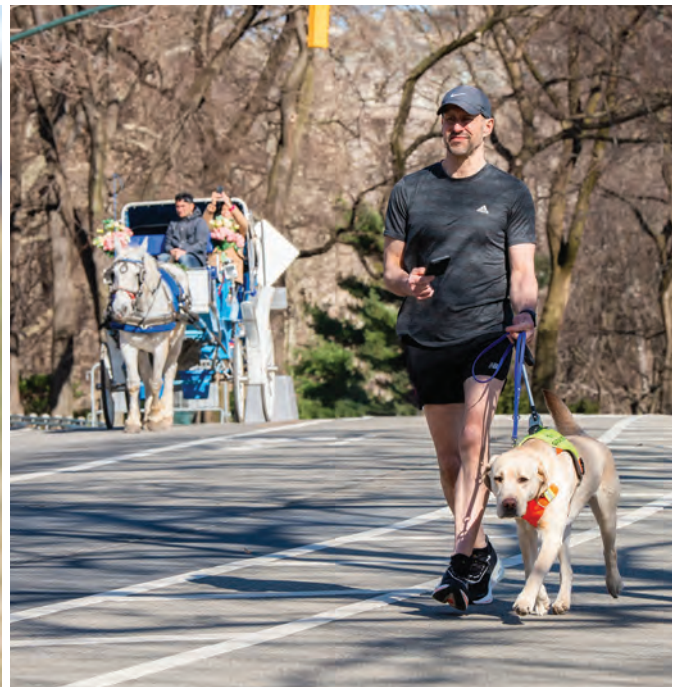
Dogs who aren’t well-suited to guide work or other careers are placed in loving homes through public adoption.

Student Training Programs

Guiding Eyes is not one-size-fits-all; we know that every guide dog is different from the next. We celebrate every match we make between a person and their guide dog — and support that partnership throughout their lives together.

We offer flexible options for someone interested in receiving a guide dog, including On-Campus Training at our headquarters in Yorktown Heights, New York and Home Training for those unable to travel. We also offer Specialized Training for people who have additional needs such as gait and balance issues, cognitive challenges, and hearing loss. And, our Running Guides program trains teams at a faster pace for enhanced physical fitness.

To further meet our students’ needs, training can be adjusted to accommodate work schedules, family life and more. Our instructors continue to refine their training during each program to meet each student’s needs — to ensure success.





CARING FOR OUR STUDENTS

As part of our personal approach, our nursing staff serves both Home Training and On-Campus Training students from the beginning of the application process. Our nurses communicate with students and their at-home practitioners in order to keep them connected, comfortable and safe during our program. While On-Campus Training is in session, nurses are on duty 24 hours a day, to assist with routine medical needs and administer first aid as needed.

Our on-campus dining program includes meals at Rosie's Café, which are custom prepared with care to nourish our students while accommodating most dietary needs. The culinary experience is often named as a highlight of students' Guiding Eyes experience.

Our beautiful Yorktown Heights campus is fully accessible, and we coordinate a wide range of activities to help students make the most of personal time.

Graduation

Graduation ceremonies are the culmination of training for our guide dog teams. Happening every two weeks, these joyful events are an opportunity for puppy raisers to connect with their dogs' new handlers and for our volunteers, donors, and supporters to share in the celebration.

Everyone is welcome to attend graduations in person or participate via livestream, and past ceremonies are viewable on our website anytime. Visit www.guidingeyes.org/graduation for details.

Retirement

The age of retirement from guide work varies considerably for each dog and is dependent upon factors related to the dog's health, age, and situation. The graduate has first option of adopting the retired guide dog or selecting an approved adopter who is a close friend or family member.

If the graduate cannot adopt, the dog is either returned to the care of their puppy raiser or placed in another wonderful home through public adoption.



GRADUATE TEAM SPOTLIGHT

Ronnie + Flower

“ Having Flower encourages me to go outside and travel more. She provides me with so much more confidence... I am much more motivated. ”



OUR SUPPORTERS

We are grateful to our donors who generously supported our mission during the 2023 fiscal year, October 1, 2022 to September 30, 2023. Your gifts make it all possible!

CATEGORIES

Donors \$100,000 and Up

Donors \$50,000 to \$99,999

Donors \$25,000 to \$49,999

Donors \$10,000 to \$24,999

Donors \$5,000 to \$9,999

Donors \$2,500 to \$4,999

Donors \$1,000 to \$2,499

Lions Clubs

Matching Gift and Employee Giving Programs

In-kind Gifts

Ways to Give

Pathfinders

Bequests & Trusts

Planned Giving

\$100,000 and Up

Nancy and John Donnelly
Suttle Charitable Trust
The Wohlers Family Foundation

\$50,000 to \$99,999

Bannerot-Lappe Foundation
John Barfield
Loreen Beisswenger Farish
Charitable Foundation
Gilberte Breslin
Mary Didot
The Community Foundation for
Greater New Haven
Glenn Greenberg and Linda Vester
Foundation
Carol Hendrix
Wayne Hockmeyer
Eli Manning
James L. Mathas Foundation
NM Morris Family Foundation, Inc.
Doctor Domenic A. Vavala Charitable
Fund of the Rhode Island Foundation
Leslie Strupp
Cynthia Vanneck
The George T. Walker Charitable Fund
of the Lehigh Valley

\$25,000 to \$49,999

Craig Ackermann
Christine McKendry and
Eduardo Andrade
The Sandra Atlas Bass and
Edythe and Sol G. Atlas Fund, Inc.
Katherine Bishop
Samual M. and Alma Catsman
Foundation
Cerberus Capital Management, L.P.
William Davison
The Flatley Foundation
Charles A. Frueauff Foundation, Inc.
Joseph and Paulette Gootter
Maris Groger
Mary P. Dolciani Halloran Foundation
William G. and Helen C. Hoffman
Foundation

Janet Humphreys
IBM Corporation
Kinloch Consulting Group, Inc.
Kimberly Krizanovic
Jeanne Maraz
The Melik-Baschkopf Foundation
Carol Mercer
Phyllis Milton
The Portmann Family Charitable Fund
Reader's Digest Partners
for Sight Foundation
The Resource Foundation
Allene Reuss Memorial Trust
David W. and Judith H. Sohl
Hugh Taylor
Janina Voss
The Lance R. Wachenheim Foundation
Michael and Barbara Walters
Ronald J. Woods Charitable Trust
Evaleen Ziemba

\$10,000 to \$24,999

Louis and Anne Abrons
Foundation, Inc.
H.A. & J.W. Alburger Charitable Trust
Kevin Alger
Kim Allen and Alex Cohen
Warren Azzara
Mr. and Mrs. Scott Belair
Keith and Corinne Bentley
Boerger Foundation
Cheryl and Gary Bosak
Boston Center for Blind Children
Amy Bourque and Tony Correia
Irene Boylan
Michael and Joan Burke
Camiener Foundation
Deborah Camp
Julianna Carner
The Thomas and Agnes Carvel
Foundation
Ellen and Nirmal Chatterjee
The Chicago Community Trust
Jay Coffman
Elinor Cohen
Marian J. Cole

Bruce and Leigh Cone
 C.S. Craig Family Foundation
 Joseph and Paula D'Agostin
 Elsie H. Del Fierro Trust
 John and Lynn Dillon
 Russell Disbro
 Howard A. Drescher
 Foundation
 Harriett and Bob Druskin
 Tim Dunn
 Davis Elkins Foundation
 Lillian Feder Foundation
 Valerie Fichera
 Delbert French, II*
 Mark Glasser
 The Goodnow Fund
 Carolyn Goodrich
 Robin L. Gordon
 June Haines
 Marianne Halle
 Taylor Hanex
 The Helen G. Hauben
 Foundation
 Sue Hayes
 Healthy Vision Association
 Mr. and Mrs. Robert Hyde
 The Kresse Family
 Cynthia and Danny Jost
 JPMorgan Chase & Co.
 The Katzenberger
 Foundation, Inc.
 Kimberly-Clark Foundation
 Charles & Lucille King
 Family Foundation
 James T. Lee Foundation
 Pamela Kuhn Lent and
 John Lent
 Josephine Luicci
 Gail and Al Maiolo
 Mr. Mordy Mandell
 Eric Margolis
 Dondrea and Danny Marshall
 A B Massey Charitable
 Gift Fund
 Joy Matson
 Susan K. McDaniel
 Christine Mele
 Megan Meuse
 Mey Share Foundation Inc.
 Sandra Mingesz
 Robert Niehaus
 Laura J. Niles Foundation, Inc.
 North Yonkers
 Community Fund
 Cheryl and Michael O'Connor
 The Odd Fellow and Rebekah
 Benefit Fund
 Arthur J. & Esther A. Ohlsson
 Charitable Trust
 Susan Oldfield
 Diane Oltmann
 Oppenheim Family Fund
 Bobbie Oxley
 George and Barbara Paletta
 Charitable Fund
 Pender Pet Caring
 Foundation
 Linda M. Phillips
 James Polis
 Dorothy Prouty
 Andrea Redmond
 Andrea Robbins

Rohauer Collection
 Foundation, Inc.
 Laurie and Marc Rovner
 Doris R. Satterwhite
 Daniel Savoie
 Arlene Schafer
 Scharpf Family Foundation
 James Warren Searcy
 Charitable Trust
 The Sexton Family
 Foundation
 John and Gabrielle Shamsey
 Cormac Shields
 Terry Shober
 Ruth Sidorowicz
 Ruth Single
 LE and Jan B Jones Family
 Fund of the South Carolina
 Christian Foundation
 Kate Speer
 Gary and Paget Stanco
 Neil and Susan Stockel
 Martha Washington Straus
 and Harry H. Strauss
 Foundation, Inc.
 Cynthia Sullivan and
 Robert Rollman
 Jeanne Swartzchild
 Tanner Industries, Inc.
 Marilyn Taylor
 Amelia and Gary Taylor
 Clare Teixeira
 Anne Travalia
 Turner Construction Company
 Jerry Umberger
 Judith Walker
 Judith Weinberg
 Weiss Family Foundation
 Sarah and John Wildemore
 The Winston Foundation, Inc.
 Linda Young
 Jill and Matthew Zames

\$5,000 to \$9,999
 Jane Adams
 Carol Adragna
 Aero Hardware and Parts Co.
 The Alexander S. Alacche
 Foundation
 Marcia Almasy
 James L. Amendola
 Foundation Fund of the
 American Endowment
 Foundation
 Keith Anderson
 Fredrica and Ray Applebaum
 Linda Atteberry
 Marianne Baker
 Barbara Waldfogel, Sydney
 Berg, and Zoe Berg
 Cathy Bernard
 Debra Bernstein
 Frank and Tracy Bisignano
 Susan Bogin
 Mr. and Mrs. Douglas
 Boustead
 Terence Brady
 William J. Brand
 Alice Bratton Clark
 Paige Levine-Brennan and
 James Brennan
 Brethren In Christ Foundation

Charles & Lois Marie Bright
 Foundation
 Sandra Brock
 Brown and Brown of
 New York, Inc.
 BTIG, LLC
 Cliff Burrows
 Karyn Caliri
 Marilyn Chan
 Louise Christopherson
 Clara Jeffery Charitable Trust
 C&K Clark Family Foundation
 The Ilene Clow Foundation
 Constance M. Cooper
 Charitable Foundation
 Crane Charitable Funds
 D'Agostino Foundation
 William E. Dean III
 Charitable Foundation
 Delta Gamma Foundation
 Susan Di Gerolamo
 Shirley Donnelly
 Doolittle Family
 Foundation, Inc.
 Queta Dregely
 Betty Dunne
 Eigen X, LLC
 Joyce M. Englund Charitable
 Foundation
 Noel Foreman Foundation
 Doris Fowler
 Janet Frankovsky
 Carlo and Kim Frappolli
 Pamela Goldstein
 Paula Goldstein
 Palma Goodman
 Michele and Marty Greenberg
 Karen Greene
 David Groves and
 Sheila Vannoy
 Karen Hahn
 The John and Susan Hammel
 Family Foundation
 Leean Hanley
 Harris Mathews
 Charitable Foundation
 Jane Haugan
 Jayne Haynes
 The Lundy Fetterman Family
 Foundation Trust
 Hieronymus Family Fund, Inc.
 Marshall Hilsberg
 Eric and Deb Hirschfield
 Hoag Family
 Charitable Foundation
 Paul Holland
 John W. and Theresa Holly
 Donald and Jennifer
 Holmgren
 Richard and Rachel Honquest
 The Howard Johnson
 Foundation
 Rosemary Hughes
 Holly Ingham
 Iveric Bio, Inc.
 Marie Jacobs
 Anne Jones
 Karen's Produce & Ice Cream
 Robert Kayser
 Lucy Keefe
 Judith Kickert
 Christine Klein
 Christopher Krako

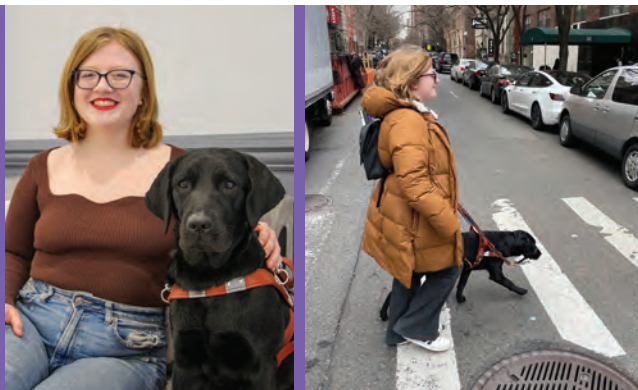
Regina Lancaster
 Warren and Barbara Larson
 Marilyn Lauesen
 Laugh for Sight
 Joseph and Tamra Lhota
 Liberty Bank
 Bei and Feng Ling
 Josh Liptzin
 Georgia Lucas Barnett
 Jil Maheu
 Mary Ann Mahoney
 Ralph G. and Wilma J.
 Maibaum Foundation
 Pamela Malinchak
 Gerald Marinoff
 Caroline Marr
 Kathleen McCarthy
 Jerry and Bernadette
 McCarty
 H. McEver
 John McGraw
 Holly McManus
 Patricia Meyer
 John Meyer
 Victoria Milam
 Daniel Milgrom
 James Mindling
 Ruth Mitchell
 Jeanne Carol Myers
 Mr. Richard W. Niemiec and
 Mrs. Ruth C. Niemiec
 Sidney Nisbet
 Curtis & O'Hara Foundation
 Bob Oldham
 Mr. John Trumble and
 Mrs. Mary O'Malley Trumble
 M. Linda Parker
 Janice and Nicholas Pepe
 Margaret Petrocelli
 Merna and Steven Pickett
 Marie Poos
 Charles Lamont Post
 Charitable Trust
 Melissa Powell
 Priolo Family Foundation
 The Raffiani Family
 Foundation
 Randall Family Fund
 William Ransom
 Dr. Cheryl L. Raymond
 Raymond Family Foundation
 Michael and Patty Reed
 Marcia Regan
 Louise Reichl
 Fran Reis
 Helen E. and Stanley H.
 Grossman Fund of the
 Rhode Island Community
 Foundation
 Ridgefield Thrift Shop
 Helen Root
 The Benjamin M. Rosen
 Family Foundation
 Victor and Suzanne
 Rosenzweig
 Carl & Verna Schmidt
 Foundation
 Schuler Family Foundation
 Linda Seaman
 The Seattle Foundation
 Seventh District Foundation
 Thomas Sileo
 Nicholas Skinner

The Sloman Foundation
 Mr. and Mrs. Robert and
 Barbara Smith
 Zohreh Sotoodeh
 Catherine and Thomas
 McC. Souther
 Andrew Stackel
 Martha Steele and Robert
 Stymeist
 Howard Stern
 Thomas and Polly Stilp
 Mickie Stokes
 Richard and Gladys Sullivan
 Mark and Julie Svoboda
 Margaretta Taylor
 Milton Tenenbaum
 Charitable Foundation
 David L. Thorp
 Trailheads
 Mary Ann Trapp
 Helen Van Syckle
 Janice Vogt
 Rosemary Walztoni
 Sandra Waterfield
 Missy Weidhorn
 Nina W. Werblow
 Charitable Trust
 Carlisle Wildeman
 Jolanda Willems and
 Marc Mandigers
 Roger Williams
 Pamela Wilson

Catherine Woods
 Louise and Kurt Wulff
 Daniel Wurm
\$2,500 to \$4,999
 Andrew Adamczyk
 Cheryl Alford
 Sylvia Almendinger
 The Annabelle Foundation
 Artemis Anninos
 Brenda Anthony
 Annetta Atchison
 Alben F. and Clara G. Bates
 Foundation
 Audrey Bickenbach
 Lynn Birdsong
 The John N. Blackman, Sr.
 Foundation
 Ed and Laura Blatchford
 Broughton Foundation
 Harold Brunssen
 Carol Burkholder
 Nadine Cancell
 Paul & Pearl Caslow
 Foundation
 Albert Clark
 Darren and Curbie Cohen
 Columbia Forest Products
 Shirley Conrad
 Theodora Corroon
 Joan Crowell
 Custodio & Dubey LLP
 Custom Ink LLC

Dana Ford Lincoln
 Data Axle
 Barry and Caroline Davis
 Family Foundation
 Laura De Reitzes
 Edward Debartolo
 Michael D'Elia
 The DeMarco Family
 Gerald Devaney
 Kat and Jason Di Piazza
 Gretchen Docter
 Dorothy Dodson
 Alvin Doehring
 Mary Ann Dudko
 The Robert and Gail Edelstein
 Foundation
 Susan Ellis
 Enterprise Holdings
 Foundation
 Bob and Ruth Escher
 Edgar Field
 Dr. and Mrs. Neil Fine
 Amy Finzi
 Jennifer Firestone
 George Gatto
 Ghiselin Foundation at Kitsap
 Community Foundation
 Joseph Giglio
 Stanley Ginsberg
 W. Kearney Glenn
 George Ann Griffin
 The Gumbo Foundation
 Fannie Gupta
 Vahan Gureghian
 James Hansen
 Lawrence Hanson
 Mable Harrington
 Mark Hayter
 Martha Heavrin
 Michael Herman
 William Herzberger
 Mary and Philip Hogan
 Joyce Horan
 Michael Hronec
 Susan Hufford
 Mary Hunkeler
 Virginia Jacko
 Alison James and
 Jim Reesman
 Blanche Maria Johnson
 Darla Jones
 Fannie and Stephen Kahn
 Charitable Foundation
 Linda Kane
 Darlene and Jim Keelor
 Janell Keith
 Barbara Kelly
 Margaret Kelly
 Edward and Brigid Kenney
 Leona Kern
 Curt and Susan Koster
 Ronald Kuenkler
 Lynn Lamar
 Land Tek Group, Inc.
 Thomas and Nikki Lasala
 Linda Leiseca
 Dolores Leite
 Betty Levinson
 Michael J. and Patricia
 Levitt Family Charitable
 Foundation
 Laura Lichtenstein
 Jorge Limon

John Lochey
 Cristy Lockwood
 Richard Lovett
 Angelo Luppino
 William Magruder
 Warren and Renee Marcus
 Carol Marker
 Carol Mascioli
 Debby Massa
 Lilo Masters Fund
 Susan Matheson and
 Jerome Pollitt
 Robert Mattson
 Bernadette McCarty
 Ramsey McGrory
 David and Susan McMunn
 R. K. Mellon Family
 Foundation
 Linn Meyer
 Kathryn Meyers
 Jennifer Miller
 The Anne R. Monroe
 Foundation
 Elizabeth P. Muller
 Charitable Trust
 Jack Murphy
 Howie and Judy Naugle
 Lynn and Robert Newman
 Jeffrey Niemann
 Robert Oates
 Stacy Oberman
 Brett and Jessica O'Brien
 Daniel and Mary Oonk
 Jane Osler Kyle
 Cinnie Parkins
 Moses L. Parshelsky
 Foundation
 Craig Patterson
 Deborah Pazourek
 E. Peebles
 Ken Pepper
 David and Lynne Petronella
 Pro Justicia Sucesora, LLC
 Gail Quinn
 Takako Asakawa Richards
 Gerald and Diane Roba
 Bruce Roberts
 Quentin Roberts
 Leo and Christine Rocca
 Mary Rojas
 Ann Rosche
 Babette Rubin
 Jeanne Ryan
 Floyd W. Safford
 Linda and Andrew Safran
 Joseph Salgado
 Kathy Sanchez
 Leslie Sarf
 Carol Saunders
 Sebastian Schroder
 Deborah Sentochnik
 Suzanne Seta
 Walter and Sally Shipley
 The Harvey and Elizabeth
 Prior Shriber Charitable
 Foundation
 David Siddons
 Marjorie Smith
 Alice and Joseph Smith
 Gordon S. and Wilma V. Smith
 Family Endowment
 Lena Sorrentino
 Daniel E. Sparks



GRADUATE TEAM SPOTLIGHT

Emma + Holly

“ Guiding Eyes stood out to me as a place where everyone seemed kind and helpful... I felt strongly that Holly would give me a sense of independence, freedom, and confidence, and I feel like I was right. ”

Joanne Starr
 Anne Swan
 Junius B. Swygert
 Mike Tadin
 Vivienne Talbott
 Carol Teter
 Tricia Thaxton
 Vickie Thompson
 Amy Thorn
 Hope Tobey
 Sharon Tupper
 Ann Vanweelden
 Phyllis Varacalli
 Stavros & Berit Veletsis
 Kevin Vernier
 Voertman Family Fund
 Wells Fargo Advisors, LLC
 Bernard Westner
 Jan Wheeler
 Betsy Whitmore
 Kenneth Whitney
 Beverly Wilson
 Craig and Barbara Wolf
 Ronnie Wood
 Charlie and Patty Wright
 Patricia Wright
 Wynndalco Enterprises, LLC
 Georgia Young
 Michael Young
 Mary Young
 John Yurtchuk
 Kathleen D. Zurlo

\$1,000 to \$2,499

Ab Cord Foundation
 Bonnie Abendschan
 Mr. Ken Ackerman
 Helen Adair Foundation of
 the St. Paul Foundation
 Carol Adams Boring
 Darley Adare
 Anne Aguilar
 Clemene Alascano
 Wendy Albert
 Robert Albin
 James Aldredge
 Frank Allen
 Sharon Allsopp
 Joe Alvarado
 Vincent Amatucci
 The Amber Charitable Fund
 Amityville Post 1015
 American Legion
 Deanna Amos
 Brenda Anding
 Richard Andracki, Esq.
 Nancy Andrews
 The Angell Foundation
 Orval and Carol Ankrom
 Karen Appelman
 Sharon Applegate
 Richard and Sue Aronoff
 Paul G. Arpin Charitable Trust
 Jeff Arnett and Ruth Ashford
 Richard Atkin
 Melody Atwell
 Gary Auman
 Deborah Austin
 Eugene and Patricia Babb
 Joanne Bacher
 Mary Bachman
 Jerre Ann Bader
 Susan B. Bailey

Sheryl Bair
 Eliza Baird
 Linda Baker
 Karen Baker
 Carol Baker
 James and Veronica Baker
 Susanne Banister
 Terrell Barch
 Jennifer Barke
 Barbara Barker
 Kay Barnes
 Gerry Barnes
 Wayne and Kathy Baron Fund
 at National Philanthropic
 Trust
 Donna Bartkowski
 Ed Bartosiewicz
 Anne Basiliere
 Richard Bassett
 John and Nellie Bastien
 Memorial Foundation
 Kathleen Bates
 Belinda Bathie
 Marie Baudet
 Jon Bauer
 Robert Baum
 Randy Beasley
 Charles Beauchamp
 Virginia Beer
 Dennis Belgard
 Jeanne Belliston
 Mark Bello
 Matt Belski
 Selina Beltrone-Plotkin
 Helen Bemis
 Tony Benjamin
 Inez Benjamin Foundation
 James Bennett
 Deborah Bennett
 Ned Bennett
 Benvenuto Family Fund
 Rosemary Berardi
 Barbara Berman
 John Bevington
 Kankan & Samina
 Bhattacharyya
 Mary Bianco
 Myra Biblowit
 Bob and Janine Bickerman
 Kenneth Bielemeier
 Catherine Biernacki
 Janet Olson-Bigham and
 Harry Bigham
 Barbara Bill
 Terri and Irwin Binder
 Lynne Birdt
 Lee and Susan Bishop
 Dr. and Mrs. John Bivona
 Gretchen Black
 Roderick H. Blackburn
 Fund at New Hampshire
 Charitable Foundation
 Deborah and Mark Blackman
 Lynn Blackston
 Lynn Blades
 John Blake
 Georgia Blanchard
 Joyce Blankenship
 Stephen Blaskevitch, Jr.
 Helen Blekken
 Carolyn Bloch
 Marsha Block
 Bunny and Jeffrey Blood



GRADUATE TEAM SPOTLIGHT

Richard + Presley

“ After attending the Golf Classic, I knew Guiding Eyes was where I wanted to go for my own guide... With Presley, I can just be a guy who wants to walk to the grocery store. A guide dog allows you to enjoy that freedom. ”

Estelle Bloom
 Richard and Nancy Blum
 Claire L. Boland
 A. Bolen
 Jonathan Bookman
 Norris Boone
 Mary Bourque
 William Bousquette
 Mike Boyce
 Judith Bradford
 Craig Bradley
 Lou Bradley
 Kim Bradley
 Marty Brady
 David Bramer
 Martha Brandon
 Byron Braswell
 David and Lorraine Bratcher
 Arnold Bressler
 Marlene Bricmont
 Elizabeth Brinkman
 David Brisbois
 Carol Britt
 Broadway Cares
 James Brockway
 Theresa Brokowski
 Kathryn Brolin
 Sharon Bromberg
 David Brooks
 Linda Browdy
 Harold Brown
 Hope Brown
 Sue and Leland Brown
 Craig and Janet Brown
 Kevin Brown, M.D.
 Mary Bruchmann
 Fred Brunke

Robert Bruns
 Karen Buckley
 Bonita Bula
 Donna Bumpass
 Theodore Bunnell
 Janet Burdsall
 Raymond Burke
 Heather Burke
 Beverly Burns
 John Burtis
 Rose Burton
 Donna Burzynski
 R. P. Buschmann Family Fund
 Holly Buse
 Larry R. and Peggy J. Busscher
 Sharon Butcher
 Michael Cacheiro
 Peter Calkin
 Tim and Deborah Callahan
 Tracy Cameron
 Linda Campbell
 Michelle Capdeville
 Mondo Cares
 Jacob Carlin
 David and Martha Carnahan
 Jennifer Carpenter
 Michael and Mary Carpenter
 Mark and Anne Carron
 Roy Carruthers
 Karin Carson
 Stephen Cartolano
 Robert Cartwright
 Robert Case, Dvm
 Elizabeth Casey
 Ernest and Suanne Casseday
 Ron Castine



GRADUATE TEAM SPOTLIGHT

Marie + Charles

“ I applied to Guiding Eyes because I learned a guide can help you if you have balance issues... Walking is a lot better with Charles, and I’m faster, too. ”

Cattaraugus Region
Community Foundation -
Mildred Milliman Fund
Margaret Cavenagh
David Chabot
Deardre Chao
Aafia Chaudhry
Ronald Chernow
Linda Chestnut
Childers-Lackland Foundation
William Chiles
Kirstin Chmara
Randolph Christen
Herman Christensen
Paul and Vicki Chrobak
Jean Churchill
Robert Clark
Daniel Clark
Dorothy Clark
Marilyn Cleland
Arlene Clement
The Harry Cobey Foundation
Michael Cobler
Michele Cocco
Hans Coffeng
Cecilia Colbert, Ph.D.
Faith Colish Fund of The New
York Community Trust
Patrica Colleton
William Collins
Vicki Collins
Michael Conlon
Nancy Conro
Virginia Coogler
Gwendolyn Cooley
Kerry Corboy
Cornerstone Advisors Asset
Management, LLC
Peter Coscia

Ernest and Carol Covey
Cindy Cox
Patricia Cox Strasburger
Robert Craig
John Craig
James Creech
David and Anne Cremons
Jennifer Crist
William E. Cross
Foundation, Inc.
Agnes Crowley
Marion Croxton
The Crystal Family
Foundation
Eleanor Cutshaw
G. Richard Cutter
Antoinette and George Daab
April and Nicholas D’Amato
Jennifer Daniel
Mark D’Antonio
Marsha Dart
Linda Davenport
Jane Davidson
Christine Davis
Carol Davis
Sharon Davis
Suzanne Davis
Pat Davis
Karen De Blanc and
Paul Fellenbaum
Mary Lynn De Loatch
De Sanctis Family
Jill Decesare
Larry Dee
Deborah Deems
Deer Run Amish Church
Suzanne Deis
Gustavo Del Toro
Rosa Delaney

Christina Dell
Janet Demuth
Bonnie Denko
Lori Derose
Linda Dettloff
Paul Deutsch
Angela Devietro and
Judy Mitchell
The Dibona Family Foudation
Mary Di Iulio
Carl Diehl
Susan Dill
Mary Dillon
Steven Dills
Andrew Diloreto
Nicholas DiMiceli
Lisa Dinoto
Amanda DiPrizio
Irene Dodd
Jennifer Donald
Harry Donenfeld Foundation
Thomas Donnelly
Helen Doppelt
Michael Dorula
Faith Doub
Kathy Dougan
David and Deborah Douglas
Virginia Douglass
C Downer
Anita Doyle
Anthony Dresden
J Richard Du Bois
Cheryl Dubs
The James and Ann Duffy
Charitable Fund
Bev Dufilho
Robbie Dunlap
Martha Dunn
Louis Durko
Susan Dusenberry
Dede Duson
Chizuko Dutta
Donna Earhart
Joyce Edwards
Andrea Eisenberg
Karen Elkin
Elaine Ellenbogen
Robert Ellis
Cornelia Ellner
Elaine Emrick
Sandra Ennis
Paul Erisman
Lisbeth Esperti
Louis Esposito
David Evans
Jane Evans
John Evans
Karen Evans
Eckhard Fadtker
Fran Faller
Neal Farber
Donna and Stuart Farber
Family Foundation
John Fareri
Sandra Farmer
Tracey Farrell
Dennis and Diane Fashano
David Fein and Elizabeth
Oestreich
Gary J. and Susan O.
Ferrentino Foundation
William K. Fescenmeyer
Terrence Fetters

The Feuerring Foundation
Laura Fey
Fidelity Brokerage Services
L.L.C.
John Fish
Norman Fitzgerald
James Fitzgerald
Steven Flagg
Tracy Flannery
Judy Flath
Elizabeth Fleming
Steve Floyd
Betty Fogleman
Vincent Foglia
L and Laura Forbes
William and Mary Forcellon
Annette Ford
Ellen Forte
Dan Foss
Frank B. and Susan Fowler
Eleanor Fox
Gary Fox
Renate Franco
Patricia Frank
Susan Frank
Shawnee Frantom
David Frattaroli
Joy Freda
Debbie Freedman
Kathryn Freiburger
Diane Froot
Andrew Fu
Richard and Ilona Fucci
Susan Fulton
Shannon Funt
Annette Furst and L. J. Miller
Angela Fusaro
Charles Futrell
Cornelia Futterman
F. Gaitan
Susan Galicki
John and Cheryl Galli
John Gannett Jr.
Robert Garbacz
John Garbarino
Kate Gardner
Gene Gardner
Nathan and Patricia Garland
Craig Gaw
GBH Foundation
Gerald and Leslie Geist
Molly Gennaro
Maxine Gensior
Karla Gentile
Steven Geyster
Anita Ghilardi
William Gibbons
The Gibney Family
Foundation
Paulette Gillig
Irma Gilmore
Merle Gilmore
Diane Gilroy
Christina Gish
Lynne Glennon
Norman Glick
Stuart Glick
Mr. and Mrs. Michael
Glosserman
Nelida Godfrey
The Goeppinger
Charitable Fund
Edwin Gold

Craig Goldman
 Irwin Goldstein
 Ruth and Sheldon Goldstein
 Foundation
 Roger Golec
 Steven Good
 Marilyn Goodland
 Myra and Drew Goodman
 Nancy Goodman
 Karen Gordon
 Teri Goupille
 Kalathur Govindarajan
 Connie Goyda
 Maude Grantham-Richards
 Dana M Grassi
 Patricia Graves
 Joseph Gray
 Ita Greaney
 Greater Kansas City
 Community Foundation -
 Trembath Charitable Fund
 Eleanor Greenwood
 Russel Grillot
 Sean and Miriam Grogan
 Howard and Joan Gross
 Gucci
 Darlene Gulino
 Amy Gussack
 Judy Hansen
 Alfred Hanson
 D Hardee
 Theresa Harper
 Rolfe Harris
 Larry W. Harris
 John and Anna Hart
 Christine and Dick Hart
 Judy Hartman
 Charitable Fund
 Carolyn Hartner
 John and Nancy Hartung
 Jason Hauben
 Andreas Hausler
 The Ellie and Les Hayt Family
 Foundation
 Neal Heffron
 John Heisch
 Peter and Lynn Hendricks
 Mary Hendrickson
 James Hendrickson
 Nancy Henley
 Cynthia Herr
 Homer & Rhea Hershey
 Roger Hess
 Thomas Hester
 Justin Higginbotham
 Christine M. and Paul Zack Hill
 Mike Hill
 Michael Hill
 Albert Hill
 Charlotte Hines
 Kenneth Hipkins
 Frances Hitchcock
 Janet Hixson
 Jack Hodges
 Earl Hoffman
 Janet and Kenny Hoffman
 William Hoffmann
 Ralph Hofheins
 Kathryn Hollingsworth
 Danforth Hollins
 Carol Holly
 David L. Holman
 J. Holmes

Valerie Holmes
 Holy Trinity Church
 Doreen Holze
 Wendy Home
 N. Honeck
 Kathleen M. Hoover
 Gary Hopkins
 Barbara Hopper
 James Hornicek
 Jan and Jim Hovda
 Verna Howard
 Teresa Huang
 Mark Huber
 H. Glenn Huddleston
 Stacey Hughes
 David Humphrey
 Brock Hunsaker
 Nancy Hunter
 David Hunter
 Barbara Huntley
 Judy Hurley and
 James J. Hurley III
 Francesco Iacopelli
 iHop
 Helen Imhoff
 Jack Intrator and
 Debrah Welling
 Teresa Ittner
 J.W. Mitchell Company
 Yvonne Jackson
 William and Judith Jackson
 Brian Jackson
 Mary Jackson
 L.C. & Margaret B. Jacobson
 Memorial Foundation
 David Jacobson
 Marian Jamison
 Marcia Jeffries
 Patricia Jenkins
 Elizabeth Jennings
 Cathy Jennings
 Keith Jennings
 Hans Jepson
 Robert Johns
 Earlene Johnson
 Carolyn Johnson
 Carol Johnson
 Trevor and Robin Johnson
 Wendy Johnson
 Julie Johnson
 David and Sharon Jollie
 Almira Jones
 Roland Jones
 Phyllis Jones
 Arlene Jordan
 George Joseph
 Andrea Joyce
 Andrew Judelson
 Susan Kahn
 Joseph Kalista
 Lawrence Kalivoda
 Carol Kane
 Caren Kaplan
 Warren Kaplan
 Rita and Henry Kaplan
 Christine Karas
 Brown Karenanne
 Karen's Hope Worldwide
 Lois Kaserman
 Kitty Katz
 H. Kaufman
 Michael Keith
 Eileen Kelleher-Ornelles

Johanna Kelleman
 Suzy Keller
 Margaret Keller
 Arleene Keller
 The M. J. Kelley Foundation
 Molly Kelley
 T. Kelley
 Carol and Scott Kennedy
 Daniel Kennedy
 Elsie Kennedy
 Susan Keppler
 Janet Kern
 Dennis Kern
 B. Kerrisk
 Carolyn Kiess
 Lucille Kietzer
 Murray and Jeanie Kilgour
 Robert Kimball
 William King
 Gerald King
 Connie King
 Dennis and Mary King
 John E. Kirzl
 Christine Klein
 Kleinow Family Foundation
 Kay Klinger
 Lisa Knight
 Melinda Knight
 Georgia Knotek
 Judy Knowles
 Nancy and William Koch
 William Koehler
 Linda Kohn
 Joel and Joanne Kolb
 Jennifer Kolber
 Pamela Kollar
 Allan Koptish
 Dennis Koskey
 Richard Kourbage
 R. Patrick and Amy Krause
 Brian Krebs
 Day Krolik

Carol Watson and
 Gregory Kunert
 Margaret Kuschel
 Marybeth Kynerd
 Katherine Lacek
 William Laivo
 Roma Landry
 Curt and Diane Landtroop
 Joy Lane
 Diane Lane
 Kathleen Langanki
 Marvin P. Langanki
 William Langley
 Valerie Lankford
 Margaret Lapcewich
 Loviah Lappin
 Betty Larsen
 Rebecca Lashley
 Amy Lau
 Robert Laubach
 William Laux
 Mike and Helen Lawlor
 Jerome Lawson
 Melvin Lazar
 Linda Leamon
 Martha Leavenworth
 Diane Lee
 David Lee
 Joann Lee
 Renato Lee
 Cynthia and Andy Lees
 Marcia Lefkowitz
 Arthur Leibowitz
 Marcella Lentsch
 Marjorie Leonard
 Joe and Karen Leonard
 Charitable Fund
 Kenneth and Robin Leopold
 Laura Lester
 Christine Lethcoe
 John Lewey
 Jan Lewis
 Nury Lewis

**GRADUATE
 TEAM
 SPOTLIGHT**

**Avelash +
 O'Neil**



“ O’Neil is beyond anything I expected. The class I was in was diverse, both in age and in our time being blind. We developed a sense of community and still stay in touch. Friends forever. ”

Kathleen Lewis
 Allyson Lightbody
 Alice Lin
 Lincoln Investment
 Mathew and Carolyn Linett
 Linwood and Trudy Parker
 Charitable Fund
 Susan Litwer, Esq.
 Ron Livingston
 Anne Lloyd
 Paul Lodola
 Emma and Craig Loftus
 Doris Lombardi
 Janette and David Long
 Dan Longo
 Wesley Looker
 Mr. Joseph Loonan
 Willis and Joe and
 Judy Lothrop
 Sally Lovejoy
 Lynne Lovell
 Julie and Israel Lowy
 Sheila Lucas
 Richard and Sandy Ludwick
 Eric Lund
 Helen Lundeen
 James Luzod
 Kelsie Macfadyen
 Christine Mack
 Janet Mackin
 Barbara Macleod

Joy Macqueen
 Scott Macrury
 Christina Madden
 Anne Magee
 Tom Maheras
 Brian and Florence Mahony
 Fund
 George Mahoney
 Patricia Majerus
 James Maldonicky
 Shiyoe Malinasky
 Kay Malmquist
 Suzanne Manieri
 Mark Manion
 Archie and Olivia Manning
 Mark Manthey
 Carol March
 Marge and John Callahan
 Charitable Fund
 Jeffrey Mariani
 Linda Marino
 Carla Marone
 Martha and Bruce Marquand
 James Marsh
 Keith Martin
 Barbara Martin
 Anthony Martuccio
 Katherine Martyn
 Donna Mason
 Mark Massarella
 Donna Masse

Betty Matarese
 Antoinette Matijevec
 Vladimir and Larisa
 Matsiborchuk
 Ellen Mattesen
 James Matthews
 Scott Mayer
 Janet Mazarella
 Paul Mc Clintock
 Hugh McAfee
 Richard McCall
 Joan McCallum
 Mary Ann and Gerrold
 McCammon
 Jean McCleary
 Larry McConville
 Linda McCorkle
 Melissa McCorkle
 Florence McCullough
 Jeanette McDaniel
 Vincent McGonagle
 John McGran
 Beverlee McGrath
 Suzanne McGraw
 Mary McGuire
 R. McIllece
 Sarah McIntyre
 Anne McKenna
 John Mckeon
 Vanessa McLean
 The McLean Foundation
 Candace and
 Steven McMaster
 McNabb Foundation
 Allan Mehrtens
 Margareta Meier
 Robert Meier
 Dorothy Meindl
 Christine Meneely
 Suzanne Merrill
 Harumi Merritt
 Metzger-Price Fund, Inc.
 Teri Meyer
 Gregory and Brenda Meyer
 Meylan-Caflisch
 Charitable Fund
 Jeffrey and Jeanne Miller
 Kenneth Miller
 Robert Miller
 Gene Miller
 Cheryl Miller
 Susan Mills
 Elaine Mills
 Isaac Osaki
 Linda Mionske
 Doreen Mirante
 Carol Miskill
 Ken Mitchell
 Jacqui Modesti
 Patricia Mondello
 Alicia Montalvo
 Jani Moore
 Donna Moore
 Barbara Moore
 Sarah Moore
 Erhard Moosmann
 Moran Family Foundation
 Barbara Morano
 Richard Morgan
 Pamela Morgan
 Jennifer Morrell
 Patricia Morrison
 Robert Morrison

Bonnie Mortag
 Gene Moscovitch
 Agnes Mulrone
 Nicole Murch
 Peter Murphy
 Robert Murphy
 Maria Murphy
 Eileen Murphy
 Marilyn and Paul Murray
 Janet E. Muyskens
 Pamela Myers
 David and Inez Myers
 Foundation, a supporting
 foundation of the Jewish
 Federation of Cleveland
 Lloyd Nagle
 David Nagle
 Anthony Naples
 Edward Nass
 National Christian Foundation
 Jame and Louisa Neel
 Stephen Neff
 Susan Neilson
 Greg Nelson
 John Nelson
 Victoria Nelson
 Iris Nelson-Schwartz
 Brett and Denise Nemanich
 Ronald Ness
 Cindy Newton
 Charlotte Prescott Newton
 Brett and Mary Nichols
 Mary Nielson
 Edythe Nimick
 Beth Norman
 Helen Nover
 Linley Oberman
 David O'Brian
 Daniel O'Brien and
 Bemadette O'Connor
 Charitable Fund
 Daniel O'Day
 Stefanie Offit
 Alice O'Halloran
 Carolyn Olshein
 Cyrus Omidyar
 Gwynne O'Reagan
 Ms. Randee Rothman and Ms.
 Wendi Orlando
 Robert Orosz
 Ann Osti
 Faith Ostwald
 Sue Ouellette
 M. Joyce Ousley
 John Ozolek
 Christopher and
 Christina Padilla
 Geraldine Palmer
 Michael Palmer
 Vicki Palmore
 David Parkinson
 Anne and Hartmat Parnitzke
 Charles Parrish
 Nancy Parsons
 Julie Patthoff
 Kalyn Paul
 Paul Payne
 Karen Pederson
 Carolyn Pedone
 Georgia Peirce
 Deborah Pepe
 Perkins & Will
 Sara Perry



GRADUATE TEAM SPOTLIGHT

Kalia + Roswell

“ From the initial home visit to my training with Roswell, Guiding Eyes has been professional and provided all the necessary support and follow-up... I am so happy and enjoying my freedom. I feel like nothing can stop me! ”

William Persampieri
 Jeanette Peter
 Pamela Peters
 Imogene Peters
 Marie Louise Peters
 Shirley Petersen
 Kai Petersen
 Carol Petersen
 Susan Petrick
 Carol Petrillo
 Cynthia Petrow
 Helene and Joshua Peyser
 Catherine Pfeil
 Daniel Phelan
 Nancy Phillips
 Michael Phillips
 Robert Phillips
 Patricia Beck Phillips
 Foundation
 Amos and Tami Pike
 Michael Piotrowski
 Mathias Piskur
 The Pittsburgh Foundation
 Cheryl L. Pitz
 Lois Placke
 Monica Platt
 Vera Plescia
 Theodore Plucinski
 Carolyn Pogar
 Sheryl Polese
 Simone Polk
 Lisa Pommer
 Dick and Sue Porth
 Posner - Wallace Foundation
 Carol Postell
 Sharyn Poston
 Ruth Powell
 Jennifer Powell and
 Andrew Wiley
 Mark Powell
 Maureen Previti
 Edgar Pritchard
 Donna Pritula
 Linda S. and Michael Purvis
 Adolph Quasthoff Foundation
 Roberta Quiat
 Robin Quirk
 Eric Rafalski
 Melinda Raffe Trovini and
 Melinda Trovini
 Rosemary Rafter
 Rainy Day Fund of the
 Community Foundations of
 the of the Hudson Valley
 Nestor Ramirez
 Chuck Ranberg and
 Bob Fisher
 Linda Randell
 Angela Rapone
 Douglas Ratcliffe
 Alvin Ravenscroft
 Recreation Farm Society, Inc.
 Thomas Reed
 Beverly Rees
 Carol Reeves
 Deborah Reher
 Claire Reid-Adkins
 Donna Reimer
 Donald Reinhard
 Barbara Reining
 Jeanne Reiser
 Nancy S. Reish
 Alyson and William Reitz

Teresa Remaley
 Trudy Remmick
 Julie Rendina
 The Reutzel Foundation
 Vonna Reynolds
 Douglas Ricci
 Peggy Rice
 The Riklin Charitable Trust
 Craig Ring
 Carolyn Rini
 Bruce Rinne
 Jane Ritchie
 Elizabeth Roberts
 Sandra Roberts
 John Roberts, Jr.
 Jim Robinson
 Joe and Maggy Robinson
 Christina Robleto
 David Rock
 The John A. Rodger Jr.
 Foundation
 Joanne Rodgers
 Daniel Rodgers
 Sandra Rodolf
 James Rogers
 Lee Rogers
 Ron Rohde
 Thomas Rollins
 Richard Romeo
 Randolph Roody
 Bridget Roots
 The Roron Foundation, Inc.
 Charles and Caryl Rose
 Daniel Rosen
 Mel Rosenfeld
 Michele Rosenmutter
 Ross Ross and Carol Weale
 John and Karen Rossetti
 Deborah Rossi
 Marianne Rossi
 PJ and Karen Rossi
 Robin Rotiroti
 Jeanne Rovaldi-Manning
 Patsy Rowland
 Myrna Rubenstein
 Leonard Rubin
 Arline Rubin
 Heidi Rubinstein
 Ann Ruchhoft
 Elaine Rudder
 Elinor Ruffing
 Mary Ruffo
 John Rufi
 Linda and Don Rumley
 Judith A. Rusher
 Evelyn Russell
 Maurice Russell
 Craig Russell
 Peter and Nanette Ryerson
 Patricia Saisselin
 Beth Saltzman
 Anthony and Jane Santy
 Vanessa and Suhas Sarathy
 Shelley Sarrin
 Donald Sartell
 Julie Saunders
 William Schaeffer
 Richard Schechter
 Robert Scherer
 The Robert M. Schiffman
 Foundation, Inc.
 Gertrude Schlabach
 Lynn Schlanger

GRADUATE TEAM SPOTLIGHT

Melchion + Larson



“ Since getting Larson, I am impressed at how quickly we walk together. It almost feels like we are gliding along or dancing! Although he is my first guide dog, the training experience was amazing, and it came very naturally to me. ”

Mark Schlau
 Robert Schlegel
 Gary Schmalzriedt
 Carola Schmid
 Arthur Schmidt
 Robert Schmidt
 Frederick K. Schoff and
 Maureen A. Mackey
 Charitable Gift Fund
 Ethan Schrader
 Mary P. Schreiber
 Schulman Foundation
 The Susan and Ford
 Schumann Foundation
 Evelyn Schwager
 Jo Schweinle
 Rudolph Scialo
 David Scott
 The David and Marilyn Scott
 Charitable Fund of the Ayco
 Charitable Foundation
 Daniel Scully
 Kristen Seddon
 Judi Segebarth
 Lisa Seifert
 Lewis Seiler Jr
 Leslie Seinfeld
 Tamson Sell
 Gary and Virginia Semrow
 Monica Sesko
 Powell and Bonnie Seymour
 William Shaffer
 Stephen Shafran
 Madeleine Shaughnessy
 Hannah Shaw Medina
 Debra Shearer
 Olivia Sheckleton
 Billy and Bonny Shelton
 Marilyn Shenenberger
 Ruth Shepard

Pat and George Shepherd
 Brenda Sheridan
 Stephen Shewbrooks
 Anne Shinn
 Marilyn Short
 Gerald B. Schreiber
 Foundation
 Anne Sibbald
 Albert Sickinger
 Susan Silbermann
 Devon Silberstein
 Martha Silver
 The Simon Family Fund
 David Simone
 Claudia Simons
 Gary Simpson
 Candace Sinclair
 Site Design Consultants
 Elizabeth Skarnulis
 Harold Skolnick
 James Skrocki
 Michael Sloane
 Sandra Slusarczyk
 Katherine Smith
 Theresa Smith
 Annabelle Smith
 Walter Smith
 Kemp and Catherine Smith
 Sean Smith
 Leola Smith
 Ken Smith
 David Sokol
 David Sorley
 Colleen Southern
 Mary Spencer
 Richard Spielberg
 Susan Spinucci
 A. William Spiry
 Janice Spredemann
 Marian Staffel

Kelly Stafford
Glenn Stambaugh
Paige Starr
Sharon Stealey
Jo Steele
Dennis Steger
Gordon Steib
Robert Stephen
Conrad Stephenson
Scott Stern
Lynn Stern and Jeremy Lang
Kathy Steve
Jeanie Stevenson
David Stock
Linda Stohon
Nikki Stokoe
Ralph Stone
Hayes and Patricia Stover
Elaine Strachan
Beth Stratton
Marjorie Strelzyn
Scott Stroinski
Joanne Suarez
Linda Sullivan
Geoffrey Summers
Weilin Sung
Kyle Swift
John Sykes
Lesley Tallack
Nicolaos Tapazoglou
Christy and Ken Taucher
Donor Advised Fund of
Central Carolina Community
Foundation
Melody Taylor
Nita Taylor
Maria Teixeira
Adele and Robert Tetzloff
THD - Thompson Habib
Denison

Earl Thoffman
Kelly A Thomas
Hilaire Thomas
Thomas Thomasma
James Thompson
Thompson/Pavco Charitable
Fund
Carla M. Thorpe
Sandra Thurston
Eileen Tiberio
Nadine Tilley
Anita Toler
Charlie Tonkin
Robyne Townsend
Townsend Family Trust
Frank Trainor
Mary Travis
Gail Triggs
Myrl Trimble
John Troutman
Mary Trovato
Cathy Trumbull
Daniel Trusler
William Tucker
Glen E. Tullman Fund of the
American Endowment
Foundation
Nancy Turcotte
Irene Tyson
Stephen Ucko
Marilynn Unruh
Anne Urban
Ali Usafee
Patsy Vacarella
Marianne Vakalis
John Van Buskirk
Robert Van Der Wateren
Judith Van Reusselaer
Andrea Vasquez
Patricia and James Verdon

Vermont Community
Foundation
Helen Verven
Jerryd and Kathy Vetter
Anthony Vitale
Barbara and Charles Voelker
Dawn Voigt
Kathy Vollano
Michaelene Wadolny
Shirley Wahlberg
Jeannette Wahlen
Robert J. Waldeck
Linda Wallace
The Wallace Family Education
Fund of Renaissance
Charitable Foundation
William Walsh
Mr. and Mrs. David Warren
Veronica Warwick
Mark Watowich
Ellen Watson
Rachel Wegter
J. Weinstein Foundation, Inc.
Jane D. Weiss Family
Foundation
Joann and Richard Weiss
Gregory Weiss
Barbara Wells
David Wentz
Sandra Werner
John Werner
Joan Western
Lynne Weston-Pontikes
William Whaley
Marie Wheeler
George Whipple
D. Whitcomb
Paula White
Herb and Gayle White
Paula White

Yvonne Wiesen
Sue Wilkinson
Charlene Williams
John Williams
Joan Williamson
Kathleen C. Wilson
Sylvia Wilson
Stephen Wilson
Glenda Wisweman
Jack Witkin
Polly Wojnaroski
Doris Wolfe
Adam Wolfson
John Wood
Diana Wortham
Rosemarie Wyke
Ann Yahner
Chul Yang
John Yanni
Margaret Yarina
Ruth Yates
Charlotte Weidaw and
Franklin Yeager
Shellie Young
M. Young
Krystal Zahniser
Mark and Phyllis Zames
Mark Zames
Jennie Zantias
Zarin & Steinmetz LLP
Cynthia Zarsky
Nicon Zasorin
Charles M. and Esther Zell
Foundation
Patricia Zima
Jane Marie Zoltowski
Neal Zung
Zvilin Fund of the Princeton
Area Community
Foundation

Lions Clubs

Aberdeen Lions Club
Alfred Lions Club
Amherst Lions Club
Armonk Lions Club
Ballston Spa Lions Club Foundation
Belfast Lions Club
Blauvelt Lions Club
Bloomfield Lions Club
BMW Lions Charity
Bolivar Lions Club
Brookfield Lions Club
Brookville-Timberlake Lions Club
Clarendon Lions Club
Colchester Lions Charities Inc.
Cold Spring Lions Club
Dansville Lions Club
East Aurora Lions Club
Essex Lions Charities Inc.
Fairport Lions Club, Inc.
Fulton Lions Club
Germantown Lions Club
Glens Falls Lions Clubs

Goshen Lions Club
Hadley-Luzerne Lions Club
Hebron Lions Charities
Int'l Association of Lions Clubs
#8439
Jacksonville Beaches Lions Club Inc.
Jeffersonville Lions Club
Kingston NH Lions Foundation Inc.
Lake Placid Lions Club
Lakeland Lions Foundation
Lions Club of Olcott
Lions Club of Pleasantville
Lions Club of Sodus
Lions Club of St. Louis, Southside
Lions Club of Valhalla Charities Inc.
Medina Lions Club
Montville Mohegan-Pequot
Lions Club
Mystic Lions Community Foundation
New York Washington Heights
Inwood Lions Club
Newtown Lions Club

Nine Partners Lions Club
Norshaft Lions Club
North Rockland Lions Club
Foundation Inc.
Ovid Willard Lions Club
Palmyra-Macedon (Pal-Mac)
Lions Club
Pine Bush Lions Club
Powhatan Lions Club
Rondout Valley Lions Club
Solvay Geddes Lions Club
South Brunswick Lions Club
Tolland Lions Club
Town of Wright/Schoharie Valley
Lions Club
Warwick Lions Club
Waterford Regional Lions Club
West Seneca Lions Club
Youngstown Lions Club

In-kind Gifts

M. Barclay
Benebone LLC
Cindy Altman
Jolly Pets

Nutramax Laboratories, Inc.
Nylabone Products
Pilots To The Rescue
Ruffwear

The Kong Company
Zoetis

Matching Gift and Employee Giving Programs

3M Company	Cisco Systems, Inc.	IQVIA, Inc.	Regeneron Pharmaceuticals
Abbott Laboratories	Citizens Charitable	Ituit	RELX Inc.
AbbVie Inc.	Foundation	J. Crew	Roblox
Accenture	Cleveland-Cliffs Inc.	Johnson & Johnson	Roche Diagnostics
ADP	Colonial Pipeline Company	Johnson Controls	S&T Bank
Aerojet Rocketdyne	Comcast	JP Morgan Chase & Co.	Salesforce.org
Agilent Technologies	Con Edison	JustGive	Shell Oil Company
AIG	Corning	Kaiser Permanente	Sherwin-Williams
Alight Solutions	Costco	KeyBank	Solidigm
Ally Financial Inc.	CVS	KKR & Co. Inc.	SS&C Technologies
AmazonSmile Foundation	DaVita	L3Harris Technologies	Standard Insurance Company
AMC Networks	Dell	Lenovo	Stanley Black & Decker, Inc.
American Express	Deutsche Bank	Levi Strauss	Starbucks
American Family Insurance	Discover Financial	LexisNexis	State Farm
America's Charities	DocuSign	Liberty Mutual Group, Inc.	State Street
Ameriprise Financial	DTCC	Lilly Endowment Inc.	Subaru of America
Amica Mutual Insurance	Duke Energy	LinkedIn	Sun Life Financial
Company	Eaton Corporation	Lumen	Symetra Life Insurance
Anchor QEA, LLC	Ecolab	Macquarie	Synchrony Financial
Anheuser-Busch	Elevance Health	Major League Baseball	T. Rowe Price
Apollo	Equinix, Inc.	MassMutual	Tapestry Foundation
Apple Inc.	Equitable Foundation	Mastercard	TD Bank Group
Applied Materials	Estee Lauder	McCormick & Company, Inc.	TEGNA Foundation
Arch Insurance Group, Inc.	Eversource Energy	McKesson Foundation	Textron
Artisan Partners	Exelon Foundation	McKinsey & Company	The Auto Club
AstraZeneca Pharmaceuticals	ExxonMobil	Medtronic	The Clorox Company
AT&T	FINRA	MGM Resorts Foundation	The Hartford
Autodesk Foundation	First Technology Federal	Microsoft	The Home Depot
Baird Foundation, Inc.	Credit Union	Mondelez International	The Humana Foundation
Bank of America	Fitch Ratings	Morgan Stanley	The Related Companies
Becton, Dickinson and	FM Global	Morgan Stanley & Co.	The Walt Disney Company
Company	Fox Corporation	Mutual of America	Thermo Fisher Scientific
Benevity	Freeport-McMoRan	National Semiconductor	Thrivent Choice
Benjamin Moore Paints	Foundation	Technology Center	Toast.org
Berry Global	Frontstream Credit	Nationwide Insurance	Toyota
Best Buy Foundation	GAF Materials	Network for Good	Travelers Insurance
Biogen MA Inc.	Gap Inc.	New York Life Insurance	U.S. Bank
Blackbaud, Inc.	GBU Financial Life	Company	UBS
Blackrock	General Atlantic	Newport News Shipbuilding	United Health Group
Blue Shield of California	Getty Images	Nordson Corp.	Unum Group
BMO Financial Group	Gilead Sciences, Inc.	Nordstrom	USAA Foundation
BMO Harris Bank	Give Back Foundation	NVIDIA	Vanguard
BNY Mellon	Give Lively Foundation, Inc.	Oracle	Veeva
Boeing	Givinga	Palo Alto Networks	Veridigm
Boston Consulting Group	GlaxoSmithKline	Paypal	Veritas Technologies
Boston Scientific	Google, Inc.	Penguin Random House	Verizon
Braze	Graco	Pentair	Vertex
Bright Funds Foundation	Guardian Life Insurance	PepsiCo	VISA, Inc
Bristol Myers Squibb	Company of America	Pfizer, Inc.	VMLY&R Foundation
Foundation	Hanover Insurance Group	Phillips 66	Voya Financial
Broadcom	HCA Healthcare	Pitney Bowes, Inc.	Warner Brothers Media
Brookfield Properties	Hewlett-Packard	PPG Industries	Wells Fargo & Company
Cambia	Horizon Therapeutics	Preformed Line Products Co.	Weyerhaeuser
CarMax	HP	PricewaterhouseCoopers	William Blair & Company, LLC
Catepillar	IBM	Progressive Insurance	Workday, Inc.
CBRE	Illinois Tool Works, Inc.	Prospect Hill Foundation	Wyndham Hotel Group, LLC
CBS	IMF	Prudential	Xcel Energy Foundation
Charities Aid Foundation	Indeed	QVC	Yahoo
Charles Schwab & Co., Inc.	Insperty	Raytheon	YourCause, LLC
Chevron	Intel	RBC Capital Markets	Zoom
Cigna	Intuitive Surgical	Red Hat, Inc.	ZS Associates

Guiding Eyes is grateful to the more than 250,000 generous individuals who support us throughout the year. We have made every effort to ensure the completeness and accuracy of this list. However, if you notice an error, please accept our sincere apologies and notify us at info@guidingeyes.org.

Bequests and Trusts

Estate of Alvin A Albright Jr
Estate of John R. Alstadt, Jr.
Estate of Jeanne A. Barnett
Yoshiko S. Bauer Trust
Betty Jane Bell Charitable Trust
Estate of Eleanor G. Bellotto
Black Living Trust
Yvonne Ives Blaich Revocable Trust
William T. Bonomi Trust
Estate of Ingeborg M. Borre
Estate of Claire Buckalter
The Paris-Buttner Charitable
Remainder Unitrust
Josephine T. Carvill
Revocable Trust Agreement
Estate of Judith A. Cavanaugh
Jean B. Celsor Estate
Estate of Thomas J. Cherry
L. Glenn Christie Jr. Charitable Trust
William Richard Jeffrey Cobb Trust
Estate of Dr. Elizabeth Collins
Dorothy D. Conkey Trust
Coombs - Robbins Trust Fund
Estate of Marlene Cruce
Estate of Phyllis J. Cuviallo
The Hannelore N. D'Elia Living Trust
Estate of Leonie N. DesRosiers
Estate of Michael Dunford
Edmund N. Duzik and
Marilyn A.P. Duzik Trust
Gordon Eaton Revocable Trust
Stuart Eisler Revocable Trust
Estate of Sondra Elkins
The Agnes Erlandson Trust
W. Moreland and Ruth U. Ernst
Charitable Trust
Doris S. Featherstone Revocable Trust
Revocable Trust Agreement of Mary
Spencer Watkins Ferchaud
Estate of Joan L. Ferry
Residuary Trust U/W Charles S. Fiske
Estate of Albert Formica
Sanford Fox Irrevocable Charitable
Remainder Unitrusts
Estate of Margaret Fritze
The Sharon Fuqua Revocable Trust
Estate of Ronald F. Furman
Edward J. Gallagher and Josephine V.
Gallagher Living Trust
Estate of Lawrence Gibstein
E. Allen and Adelaide R. Ginkinger
Memorial Trust
Julia D. Gkonos Trust
Johanna E. Goering Trust Agreement
Jill H Goldberg Annuity
Suzanne Guice IRA
Estate of Irene M. Haas
Estate of Margaret Nagy Hajtmanszky
Janet Reust Harris Trust
Estate of Rachel Hayden
Estate of Gladys Hebeisen
Estate of Irene Heffernan
Estate of Charles B. Hendershott
Estate of Harry Herzek
Estate of Harry E. Herzek
Estate of Arline Hildebrandt
Estate of Joan E. Hohncke
Charlene Hurt IRA
Fumiyo Ichikawa Revocable Trust
Norma L. Jaffe Revocable Living Trust
Helen Jane Harman Revocable
Living Trust
Mary Janvrin Revocable Trust
Gordon Jaques Trust
Ruth M. Jones Memorial Fund
Mariah Julio IRA
Estate of Sherwin A. Kane, Jr.
Estate of Richard William Keller
Barbara Kelly Charitable Lead Trust
Isabel F. Kouri Trust
Estate of Emma Jeanne Kovac
Phyllis Kowats IRA
Howard Lasher Revocable Trust
Estate of Paul Lazur
Carol M. Lehmann Revocable Trust
Wayne and Hope Leizear Trust
Ella Lerner Revocable Trust
Virginia Levenhagen Survivor's Trust
Melva A. Long Revocable Trust
Estate of Eldo Luciani
Barbara Mach Estate
Estate of Margaret Ann Machnicki
William and Beatrice Madauss Trust
John Malanga Trust
Charles L. Mannillo Revocable Trust
Estate of Sharon Maus
The John S. McEvoy Living Trust
Beverly J. Merritt Trust
Beverly Merritt Annuity
Elynn Merritt Annuity
Carol L. Merritt Living Trust
Louise F. Meyer Irrevocable Trust
Estate of Glenn Francis Michaelson
Estate of Dale Moran aka Marguerite
Dale Moran
Horace A. Moses Trust
Ruth N. Moulton Charitable Trust
Gertrude E. Muller Revocable Trust
Estate of Barbara Ann Mulvaney
Estate of Henriette L. Musgrove
The Estate of William J. Myslak
Estate of Joan E. Nalesnyk
I. J. Nast Trust
Estate of Jane C. Nelson
Nelson Grantor Trust
Estate of Carolyn Sue Nicodemus
Linda Kay Nicoll Trust
Jean Leslie Norcross Revocable Trust
Estate of Barbara E. Nowaczyk
Angeline M. O'Meara Trust
M. Colyer Charitable Trust
Margaret E. Otto Administrative Trust
Betty M. Overton Trust
Estate and Trust of Virginia Pingrey in
Memory of Harry James
Irene Plaga IRA
Nancy L. Plumb IRA
Aurora Portilla Revocable Trust
Estate of Dennis Powell
Estate of Howard Prass
David M. Pyrich Estate/Trust
Naomi K. Raber Nongrantor Charitable
Lead Annuity Trust 1
Josephine Enzone Read Annuity
Estate of Jean M. Renchkovsky
Eugenia Riordan Mule 2010 CLAT
Estate of Thomas Ritzman
Estate of Ilena S. Sack
Mary Sage Charitable Trust
Margaret Sage Charitable Trust
Fredericka Santos Brokerage Account
Warren W. and Pauline Sass
Living Trust
Joanne K. Schmidt Trust
Schommer Revocable Trust
Estate of Steven Schrum
Estate of Patricia Schubert
Estate of Shirley S. Schwartz
Samuel F. Scott Trust
Jack O. Scroggins
Charitable Foundation
Estate of Mary Secula
Estate of Marianne Seidenberger
Estate of Suzanne Shepherd
Estate of Marcia L. Shuman
Estate of Lavona E. Slack
The Smith Family Trust
Estate of Helen Smith
Kirk Smith Trust
Roy S. Smith Charitable Trust
Estate of Jeanette L. Spaulding
Anne R. Stanley Revocable Trust
Grace C. Stebbins Trust
Stewart Family Trust
Donald R. Storey and Judith M. Storey
Trust, Dated December 20, 2016
Estate of Mary Jane Thomas
Irene E. Thompson Living Trust
Estate of Adele G. Trested
Erwin & Helen Tummel Revocable Trust
Estate of Margaret Jane Tweddell
Estate of Marilyn M. Vahlkamp
Estate of Beverly A. Van Dyke
Arlean M. Vauthier
Revocable Living Trust
Estate of Jane Vilmar
Estate of Jean Vlamis
Albert Walters Trust
Estate of Joseph Wargo
Ruth E. Warren Trust
The Ethel J. Watts Trust
Estate of Daniel Waxman
Estate of Winifred R. Williams
Estate of Grace L. Williams
The Wincek Family Trust
Revocable Living Trust of J.E. Witchel
Estate of Elizabeth J. Wolf,
in loving memory of her uncle,
Edward Williams
Henry C. Wruble and Leslie S. Wruble
Charitable Living Trust
Estate of Lynne Fields Young
Estate of Joan Kershaw Young
Estate of Laura S. Yurkowski
Estate of Maryln Zahler
The Norma Jean Zaske Living Trust
Harold Zedler Declaration of Trust



WAYS TO GIVE

“ Because of Guiding Eyes, thousands of people who are blind will never walk alone. ”

- Marvin + Jude, Pathfinder Society Members

Any donation is welcome!

Special opportunities to support our mission include:

▶ \$500 to \$2,000	Personalize a leaf or stone from our “Honor Tree” for a beloved pet or person.
▶ \$1,000	Sponsor a graduation ceremony.
▶ \$1,000 to \$2,500	Dedicate a cute paw on our “Paws of Fame” wall to honor a loved one.
▶ \$5,000	Special Name a Guiding Eyes puppy.
▶ \$10,000	Sponsor the Home or On-Campus Training of a guide dog team.
▶ \$50,000	Sponsor a Guiding Eyes handler-guide dog team, from breeding through training.
▶ Pathfinder Society	Become a Pathfinder by including Guiding Eyes in your estate plans.



Visit [GuidingEyes.org/give-today](https://www.guidingeyes.org/give-today) for more information



MAKE A BIG IMPACT WITH A FUTURE GIFT

By including Guiding Eyes in your estate plans, you can help us continue our life-changing work while also meeting your personal and financial goals.

Options range from a simple bequest to a gift that provides you with income for life, such as a gift annuity or trust. Guiding Eyes can assist you with sample language and other information to discuss with your financial advisor.

Our Pathfinder Society exists to recognize friends who have remembered us in their estate plans. Becoming a member of the Pathfinders is a beautiful testament to your dedication and it comes with heartfelt tokens of our appreciation — including updates on a pup you help to support. You'll also be invited to special events and gatherings in your area.



Visit GuidingEyes.MyLegacyGift.org

or contact Kathleen A. O'Reilly at (914) 243-4355 or KOReilly@guidingeyes.org.

Pathfinders

Ms. Renee Abernathy*
Jane Adams
Mr. and Mrs. Ronald E. Ahlers
Ms. Nell M. Alger
Mrs. Cynthia Y. (Byron) Allen
Dr. Julie Ann Allender
Jennifer and Brian Alves
Christine G. Anastos
Mr. Donald J. Augustin
Susan B. Bailey
John Baker
Mr. L. Eddie Ball
Chris Ball

Mr. and Mrs. Stephen W.
Barker
Mr. and Mrs. George E.
Bashaw
Lana Bauman
Ms. Gayle Becker
Ruth Begany
Jeffrey Benario and
Kathy Flood
Jennifer Bennett-Yafanero
Ilene Berger
Sandra Bernstein
Gail and Charles Bisignano

Ms. Linda Blakely
Ms. Janice Blanton
Gail Marie Blosser
Alida Bockino
Susan Bogin
Mr. and Mrs. Nathan J.
Bolognini
Judy Bon
Ms. Ardis Bourland
William J. Brand
David T. Brandt
R. F. Breuer
Brad Brieman

Ann D. Broekhuizen
Barbara A. Brunner
Patrick Bucher
Mr. and Mrs. Michael Buckley
Susan Budin
Richard and Pamela Burke
Gail M. Burris
Donald R. Byrd
Brian and Pamela Canham
Tabitha (Annie) Carini
Mr. and Mrs. Ramon V. Carli
Mark and Anne Carron
Linda M. Cartwright

Barbara Castellano
Cindy Chamberlin
Ruth Chase
Barbara A. Cicalese
Judith and Warren Clark
Mr. Armand Cohn
Anna Conklin
Linda Cooper-Moriarty
Rocco and JC Cornacchia
Mr. and Mrs. Tom Cote
Cindy Cravitt
William R. Crawford
Francis G. and Timothy P. Crawford
Dianna Crocker and Michael Nash
Mrs. Deidre H. Crofton
Maria Curreri
Eileen M. Curtin
Joseph and Paula D'Agostin
Patricia and John d'Auguste
Linda Darico
Jane Daugherty
Wendy S. David
Ellen Davis and Myra Kaplan
Ann Davis-Ramsey
Linda N. Deeter
Karen Delisle
Mr. Michael DellaRipa
Angela Devietro and Judy Mitchell
Brian and Pamela Canham
John and Lynn Dillon
Linda M. Doster
Ms. Jeanne Dregalla
Ms. Patricia Driscoll
Sherrie Dulworth
Penny Dvoracek
Ms. Joyce Egeberg
Karen M. Eismann
Mr. and Mrs. Reid Elko
Deni Elliott
Ms. Dianne M. Ende
Bob and Ruth Escher
Christine A. Facondini*
Norman and Susan Fainstein
Heidi Farnham
Lee Fatell
Karen Fiebig
Carmen Figueroa
Mr. and Mrs. Richard Fisher
Ms. Sally J. Fisher
Gail Ann Fisher
Maureen Fitzgerald
Julie Fleming
Ethan Flint
Mary L. Foley*
Mrs. Suzanne Ford
Rita O'Brien Sims Franklin
Ina R. Friedman
Mark Fryman
Minnie Cobey Gallman
Sandra Gamble
Ms. Margaret Gardner
Dr. Joel Gavriale-Gold
Betty Gerendasy
Phyllis M. Gibula
Frances A. Giovanetti
Ms. Mary V. Gloss
Stacy Mignon Glover
Mr. and Mrs. James Goldman
Mrs. Marian Goodloe
Mary Graefen
Marsha Graves

Margaret M. Grootkett
Tom and Holly Groos
Edmund A. Grossman
James Haas*
Carol V. Haberer
June H. Haines
Mrs. Natalie Hall
Sandra G. Hall
Jean Hamburg
Mr. John K. Hammel
Hayes and Karen Hanley
Camilla Hardmeyer
Diana Harper
Barbara T. Hawkins
Bonni Heitman
Ms. Elaine Henderson
Jane Hettesheimer
Miss Carole J. Higgins
John and Nancy Hines
Fae L. Hoffman
Mrs. Marie Horhota
David C. Horn
Rebecca Horyczko
Carole Houghton
Jim and Jan Hovda
Sharon Howerton
Brian F. Hoyt
Marianne Huber
Ms. Gail A. Hummer
Janet Humphreys
L. A. Hunt
Gunilla Isaksson
Dory Israel
Lynn M. Jackson
Cathy E. Jaster
Eileen D. Jauch
Lynda Jeppesen
Mrs. Mary Alice Johnson
Ms. Michelle Johnston
David and Barbara Katz
Patty Kelly
Arlene and Michael Kelly
Charles J. and Nancy Kennedy
Tony and Fran Kerchner
Ms. Joanne Kish
Janet F. Kleiner
Carol and Bruce Koch
Flora Kowal
Daniel Krakovsky
Hildegard Krause
Roger K. Krott*
Kenneth Laban
Larry and Ruth Ladd
Mrs. Shirley Laird
Mr. Marvin P. Langanki
Jeanette Lasher
Dr. Rebecca R. Leas
Ms. Carol Anne LeBlanc
Janice and Neil Levett
Christine B. Lewis
Mary Adams Loomba
Nancy S. Lothrop
Karen P. Lowden
M. Leona Luckason
Mr. and Mrs. John* Luicci
Peggy Nance Lyle
Mr. Kurt Malison
Michael Mallies
David Mangeim
Dr. and Mrs. William L. Mangold
Judith Margerum
Miranda H. Markart

Anna M. Markey
Caroline Marr
Barbara and Phillip Mathiews
See Karen McIsaac Contact
Diane B. McGrath
Karen McIsaac and Ted Mays
Mrs. Sharon McKenna
Judy and Neal McKinley
Cheryl McKy
Charles and Michelle McNutt
Joanne Mendes
Mrs. Marcia Meracle
S. E. Metz
Jocelyn L. Miller
Cindy Minalt
Charlene Karen Mitchell
Gloria A. Moak
Michael Moraca
Sarah and Jonathan Mugel
Suzanna Erin Murphy and Brian Sowers
Jeanne Carol Myers
Ms. Karen M. Naja
Gerri Natiello
Dr. Norman Needel
Mr. and Mrs. John Nelepovitz
Mrs. Margo M. Neubauer
Barbara L. Neuby
Charlotte Prescott Newton
Renee Normandy-Shane
Mike and Sheryl O'Connell
Brian O'Day
Ms. Laura Oftedahl
Bob Oldham
Barbara Pajak
Jerry A. Parish
Elizabeth Penn
Timothy Peterson
Terri Pigue and Ralph Sole
Cheryl L. Pitz
Ruth E. Pollow
Anne Powell
Angelo J. and Ellen Purcigliotti
Diana Quagliariello
Rosemary Rafter
File under Ann Davis Ramsey
Phyllis and Don Ranum
Rev. David B. Rapp
Karin and Lawrence Rappaport
Mr. Francis H. Rasmus, Jr.
Donna Raven
Alexis Read
Ellen Rice
Jerome Richter
Cynthia Sullivan and Robert Rollman
Miss Augusta A. Rosasco
Ms. Edith Rosenfield
Sally Rosenthal
Cynthia and Ken Rosenthal
Mr. Leo E. Roy
Pamela Ruegg
Joe Ruzzo
Terry and Carolyn Ryan
Joan-Ann Ryan-Murphy
Gwen Samp
Ms. Doris R. Satterwhite
Eileen Schary
Ora Joan Schepps
Mr. and Mrs. Richard Schmidt
Ronald Schofield
Leslie and Jerry Schratz

Mr. and Mrs. Richard Schroeder
Richard H. Schwartz
Diane M. Senkow
Suzanne Shea
Ms. Sandra M. Simpson
Linda Slavin
Mr. and Mrs. William I. Small
Donna K. Smith
Kathy and Jeff Smith
Anne C. Smith
Terri Pigue and Ralph Sole
Suzanne Erin Murphy & Brian Sowers
Marjorie Stegall Sparks
Linda L. Spicer
Mrs. Carol P. Spisak
Mark F. Spisak Life Insurance Trust
Darrell J. Stout
Nancy Sutton
Mrs. Karen J. Swope
Marie A. Tarantino
Lois Ruth Taylor
Vickie Thomas
Al Todd
Jill T. Tracey
Anne Travalia
Ms. Marylou Tripolino
Ms. Darlene J. Turner
Vicki M. Tyler
Steve Varvaro
Norma J Violante*
Michaelene J. Wadolny
J. Rachelle Walker
Tom* and Mary Lee Walton
Cheryl and Basil Wankewycz
Mrs. Loretta Warsaw
Christine M. Washburn
Kurt Wassen
Mr. Clayton Waxham
Diane Karen Webster
Mr. and Mrs. Michael Welt
Bobbie White
Herb and Gayle White
Lilita K. Wier
Anneke Williams
Michaelene D. Willy
Anita Wilton
Karen J. Wiltse, COT
Mr. Fred Wolter
Judith and Winton Wood
Ginny A. Wright
Ms. Louise B. Wulff
Lynne Young
Bonita R. Zaucha*
Sharon Zenger
Eleanor M. Ziegler
Ms. Alice M. Ziittel

* Deceased

FINANCIAL REPORT FOR FISCAL YEAR 2023

GUIDING EYES FOR THE BLIND CONDENSED AUDITED FINANCIAL STATEMENTS
SEPTEMBER 30, 2023

STATEMENT OF ACTIVITIES

	Without Donor		With Donor	
	Restrictions	Restrictions	Total	
Public Support:				
Contributions	\$ 21,426,091	\$ 419,182	\$ 21,845,273	
Planned giving	\$ 12,446,956	\$ 343,821	\$ 12,790,777	
Other income	\$ 618,726	-	\$ 618,726	
Net assets released from restrictions	\$ 1,547,280	\$ (1,547,280)	\$ -	
Total Public Support	\$ 36,039,053	\$ (784,277)	\$ 35,254,776	

Expenses:

Program Services

Student Instruction & Dog Training	\$ 10,390,665	-	\$ 10,390,665	
Client Experience	\$ 2,698,712	-	\$ 2,698,712	
Veterinary Hospital	\$ 9,062,637	-	\$ 9,062,637	
Canine Breeding	\$ 957,389	-	\$ 957,389	
Facility & Food Service	\$ 1,785,025	-	\$ 1,785,025	
Enrichment	\$ 1,843,927	-	\$ 1,843,927	
Total Program Services	\$ 26,738,355	-	\$ 26,738,355	

Supporting Services

Management & General	\$ 2,839,925	-	\$ 2,839,925	
Fundraising	\$ 7,762,061	-	\$ 7,762,061	
Total Supporting Services	\$ 10,601,986	-	\$ 10,601,986	
Total Expenses	\$ 37,340,341	-	\$ 37,340,341	

Excess of Public Support Over Expenses	\$ (1,301,288)	\$ (784,277)	\$ (2,085,565)	
Investment income (net)	\$ 7,459,619	\$ 902,579	\$ 8,362,198	
Other net asset adjustments	\$ 64,577	-	\$ 64,577	
Net assets, beginning of year	\$ 98,298,308	\$ 8,444,420	\$ 106,742,728	
Net Assets, End of Year	\$ 104,521,216	\$ 8,562,722	\$ 113,083,938	

STATEMENT OF FINANCIAL POSITION

Assets	Without Donor		With Donor	
	Restrictions	Restrictions	Total	
Cash and cash equivalents	\$ 26,450,195	\$ 2,102,923	\$ 28,553,118	
Receivables and prepaids	\$ 3,388,429	-	\$ 3,388,429	
Investments	\$ 54,369,728	\$ 6,459,799	\$ 60,829,527	
Other assets	\$ 447,679	-	\$ 447,679	
Operating Lease Asset	\$ 101,775	-	\$ 101,775	
Land, buildings and equipment, net	\$ 24,170,682	-	\$ 24,170,682	
Total Assets	\$ 108,928,488	\$ 8,562,722	\$ 117,491,210	

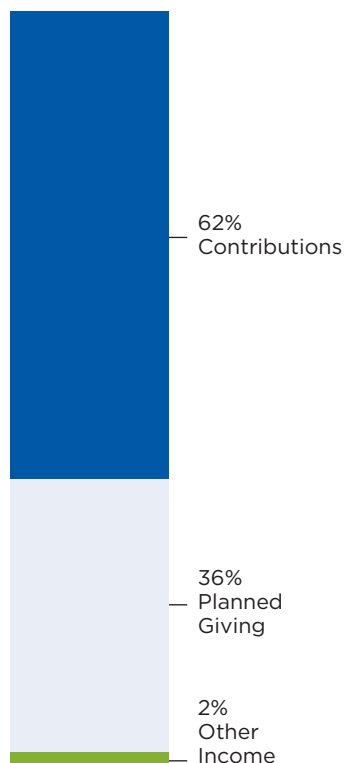
Liabilities & Net Assets

Accounts payable & accrued expenses	\$ 1,504,790	-	\$ 1,504,790	
Public Support Received in Advance	-	-	-	
Gift annuity and other reserves	\$ 1,994,108	-	\$ 1,994,108	
Bonds payable	\$ 421,020	-	\$ 421,020	
Deferred 457B	\$ 385,579	-	\$ 385,579	
Operating Lease Liability	\$ 101,775	-	\$ 101,775	
Net assets	\$ 104,521,216	\$ 8,562,722	\$ 113,083,938	
Total Liabilities and Net Assets	\$ 108,928,488	\$ 8,562,722	\$ 117,491,210	

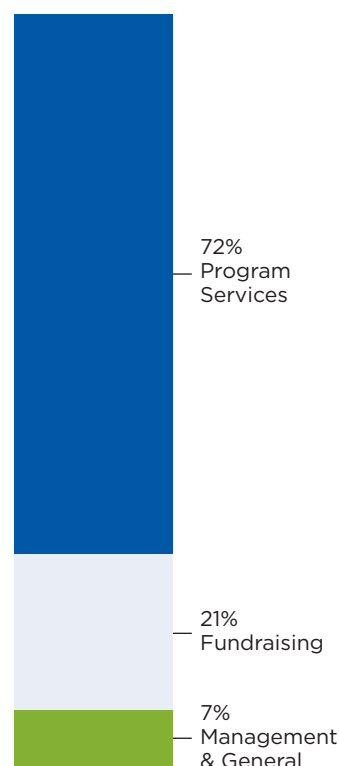
Our website, which contains the electronic financial statements, will advise the reader that such financial statements are presented for convenience and information purposes only, and while reasonable efforts have been made to ensure the integrity of such information, it should not be relied on. A copy of the printed fiscal year 2023 audited financial statements will be provided upon request.

The above condensed financials have been taken from the fiscal year 2023 financial audit performed by BDO, USA LLP.

FY23 PUBLIC SUPPORT



FY23 FUNCTIONAL EXPENSES



OUR LEADERS

BOARD OF DIRECTORS

John L. Donnelly, *Chair*
Holly Hess Groos, *Vice Chair*
Matthew E. Zames, *Treasurer*
Jane Adams, *Secretary*

Eduardo Andrade
Patricia David
Wendy S. David
David Fein
Sue Kelsey
Curt J. Landtroop
Eli Manning

Jane C. Parker
Andrea Redmond
Cory Shields
Thomas McC. Souther
Cynthia Sullivan
Dr. Gaurang Trivedi



Board members and instructors/staff, left to right: John Donnelly, Board Chair; Miranda Beckmann, Foundation Manager; Curt J. Landtroop with guide dog Quincy; Eduardo Andrade; Melissa Carney, Community Outreach & Graduate Support Manager with guide dog Aron; Thomas McC. Souther; Jane C. Parker; Andrea Redmond; Patricia David; Holly Hess Groos; Chelsea Nohan, GDMI Trainee; Caroline Walsh, GDMI Trainee; Allie Greenberg, Foundation GDMI; Cynthia Sullivan; Michelle Tang, Placement Specialist; Eli Manning.

Not pictured: Jane Adams, Wendy S. David, David Fein, Sue Kelsey, Cory Shields, Dr. Gaurang Trivedi, Matthew E. Zames.

SENIOR MANAGEMENT TEAM

Thomas A. Panek, *President & Chief Executive Officer*
Beth Brenninkmeyer, DVM, *Chief Veterinary Officer*
Gerald Brenninkmeyer, *Director of Training*
Elena Consalvo, *Chief Development Officer*
William Ma, *Head of Technology Operations*
Laura Peterman, *Chief of Staff*
Janine Petrora, *Head of Human Resources*
Danielle Roth, *Chief Financial Officer*





BECOME A VOLUNTEER

Volunteers are a vital part of the Guiding Eyes community. Ways to become involved include:

▶ CAMPUS VOLUNTEERS

Assist in kennels or in our offices, gather social media content, help with event planning, serve as a brand ambassador.

▶ PUPPY RAISING

Provide a home for a pup, teach them basic skills, and attend training classes with them.

▶ FOSTER A BROOD/STUD

Provide a permanent home for a brood or stud dog.

▶ EARLY TRAINING & SOCIALIZATION

Help our pups learn confidence and resilience on campus.

▶ HOME SOCIALIZATION

Introduce pups to new sights, sounds, and people for 3-5 days in your own home.

▶ HOME LITTER CARE

Host a mom and litter of future guide dog puppies for up to 5 weeks in your own home.



Visit [GuidingEyes.org/Volunteer](https://www.GuidingEyes.org/Volunteer) to learn more.

GUIDING EYES FOR THE BLIND

611 Granite Springs Road
Yorktown Heights, NY 10598
(800) 942-0149



[GuidingEyes.org](https://www.GuidingEyes.org)

Guiding Eyes for the Blind is a leading nonprofit guide dog school with 501(c)(3) status.